



SANDEEP SHIKRE & ASSOCIATES

FORM



At SSA, as Architects, Designer Planners we've partnered with our Client's on numerous projects till date. These projects can be as small as an 500 Sq. ft to as large as Urban Planning. We've more than 150 professional networked in Mumbai, Pune & Bangalore and combine local expertise with global prospective.

Our work reflects an enduring commitment to sustainability & the belief that design & planning is one of the most powerful strategic tools for securing lasting competitive edge.

Another year has passed and here's we at SSA are sharing with you all that has happened in 2008, all that has been fulfilled.....

Our goals & dreams.



- 1 Kohinoor City – Residential Phase-I
- 2 Hotel At Gelenzhic, Russia
- 3 Taj Hotel, Surat
- 4 Barbeque Nation – Pan India
- 5 Neelkanth Greens
- 6 Suyojit One World
- 7 Neelkanth Palacia
- 8 Residential Interiors
- 9 Residential Interiors
- 10 Sayaji Hotels, Indore
- 11 Kokilaben Dhirubhai Ambani Hospital
- 12 Weekend Villa
- 13 Galaxy Surfactants Ltd.
- 14 Villa Interiors – Neelkanth Woods
- 15 Apartment Building – Matoshree Heights
- 16 Hotel Kohinoor Continental
- 17 Corporate IT Park for Neelkanth
- 18 Urban Planning – Lonavalley
- 19 Urban Planning – Khalapur
- 20 SSA Engineers
- 21 GKKSSA Consultants Pvt Ltd
- 22 About SSA Architects

Kohinoor City – Residential Phase-I

Client Kohinoor Developers
 Site area 300,000 Sq. ft
 Services Architectural & Project Management

Recent economic cultural & social changes have raised quality of life expectation among Mumbai's citizens. So when Kohinoor Developers decided to build Kohinoor City at Vidyavihar, Mumbai, the innovative builder looked to SSA Architects.

SSA redefined the standard residential complex by focusing on community & designed Kohinoor City Phase-I to create a gated community experience, anchoring the project's 11 buildings with streets lined with recreational spots. The result is a viable residential complex where residents, mingle, stroll and enjoy an urban experience. At the northern end of the complex a vibrant water body has been designed to break the monotony of the landscaping.

For residents, the experience is enhanced with the state of art security system, ready to move in apartments with modular kitchens inclusive of hob, chimney & water purifiers, recreational areas for senior citizens, physically challenged and kids zones.

By instilling a greater sense of social belonging, Kohinoor City Phase – I has become a preferred place to live in a competitive residential market.



A viable residential complex where residents, visitors mingle, stroll and enjoy an urban experience



Hotel at Gelnzhic, Russia

Client USKK
 Site Area 600,000 Sq. ft
 Services Architectural & Interior Designing

SSA reinvigorated the master layout at Gelnzhic Russia where there are villas and apartments on 1.6 hectares of land along with an area allotted for a world class 5 star retreat of 600,000 Sq. ft to promote tourism.

The design presentation included 3D views developed by the GKKSSA and SSA provided a design solution that appeal to both business travellers and tourists. Located along the beach front, the concept proposed was an envelope of water to encompass nature hence the structure has a more free flowing space that is both symbolic & iconic in nature where the curved glass shape is a rising wave.

The Linear plan follows the line of the beach front and was dictated by the decisions to provide all rooms both private and public with unobstructed views towards the Sea.

The design incorporates various activities like business and convention centers, retail along the curved glass atrium for exclusive signature shopping, healthspa, gaming zones, night clubs with beautifully landscaped recreational areas.

The guest rooms at every level have been different themes e.g. Indian, Moroccan, Japanese etc to ensure excitement and avoid a feeling of déjà vu for repeat guest.

The concept proposed was an envelope of water to encompass nature



Taj Hotels, Surat

Client JHM Hotels
 Site Area 32,500 Sq. ft
 Services Interior Designing

In 2007 SSA Architects was approached to be the Executive Architects for Interior Designing of the Gateway brand of Taj Hotels at Surat. SSA along with GKKSSA co-ordinated the project to produce a cohesive design for the public spaces housing the lobby, tea lounge, speciality restaurant, coffee shop, terrace dining.

The individual spaces inspite of having their own identities read as a single unit that both compliments and sets it apart.

The focal point is well thought detailed "Mood Distribution" where the lobby gives an ambience of openness and splendour, the windowless speciality restaurant with dim lights & candles a setting of calmness, with the coffee shop & terrace facing the river to rejuvenate.

The focal point is well thought detailed "Mood Distribution"



Barbeque Nation – Pan India

Client Sayaji Hotels Ltd.
 Size 5,000 – 10,000 Sq. ft each
 Services Interior Designing

A concept restaurant developed for fast expanding Sayaji Group for their chain of fine dining restaurant.

The first of the restaurants was in Mumbai and subsequently expanded in Bangalore, Hyderabad, Gurgaon, Delhi.

It was designed reflecting a unique dining experience. It has a relaxed deck like wooden sofas in one section, the bar section is more of a lounge bar environment & also a garden set which has a garden environment. All the three visual experiences are merged into each other to form one homogenous space by means of the interior elements such as textures on wall, floors, fabric etc. creating an environment that sets the mood for relaxation & enjoyment.

Barbeque Nation is designed reflecting a relaxed dining experience



Neelkanth Greens

Client Neelkanth Developers
Size 1,000,000 Sq. ft
Services Architectural

Set in Thane with the back drop of the Sanjay Gandhi National Park is "Neelkanth Greens". The client was desirous of creating a space to symbolize the close relationship between man and nature. Neelkanth Developers commissioned SSA to develop a master plan for Neelkanth Greens, Thane. The group wanted to create an iconic plan with dual use core, challenging ground conditions. The scheme includes a Podium + stilt + 27 storey's tall structure. Rising above the ground, these high rises complement each other.

8 towers are designed around the periphery to create an open space in the centre for amenities & recreations. The cleverly designed podium parking houses the car parking. The gated community will have 864 residential units alongwith amenity and recreational space, inclusive of a clubhouse, swimming pool, tennis courts etc.

Creating a space to symbolize the close relationship between man and nature



Suyojit One World

Client Sun Infrastructures Pvt. Ltd.
Size 600,000 Sq. ft
Services Architectural

SSA's team in co-ordination with GKKSSA developed & programmed the retail mall at Nasik, India's rapidly transforming major urban hub. The retail mix includes multiplex, hypermarket, gaming zones, retails shops, food court at segregated levels. A vibrant welcoming environment with warm finishes, a lively colour palette and contemporary design vocabulary will enhance the customer experience.

Warm finishes, a lively colour palette and contemporary design vocabulary enhances the customer experience



Neelkanth Palacia

Client Neelkanth Developers
Size 1,000,000 Sq.ft
Services Architectural and Project Management

Neelkanth Palacia, a mixed use complex located in Vidyavihar, Mumbai is designed by SSA in co-ordination with GKKSSA team. An innovative style has been incorporated to create the open ambience of the mall. It houses commercial office spaces, retail shops, entertainment centres, food courts with banqueting facility, covered terrace garden & 5 storied parking for efficient vehicular movement.

An innovative style has been incorporated to create the open ambience of the mall



Residential Interiors

Client Private
 Size 4,000 Sq.ft.
 Services Interior Designing

Situated in the heritage precinct of "Five Gardens", Matunga and surrounded by the green & clean gardens, the residence on the 13th floor of the only multi - storeyed bldg in the area, enjoys a beautiful & unobstructed view upto the Arabian Sea in the west and the creek in the east.

Thus to take the full advantage of the view, and the breeze the residence has been designed with large glass windows, but at the same time offsetted from the main external elevation with terraces and balconies to maintain a sense of privacy indoors.

The concept of design revolved around the use of glass is minimum & dark woods like walnut, wenge. Natural stones like the unpolished old gold stone & rough rosy pink stone are used to give a bold and solid look to the minimal furniture. Arts and artefacts are also extensively used to give a warm and homely feeling. The entire furniture is customised as per the client's requirements.



Natural materials used give a bold & solid look to the minimal design.

Residential Interiors

Client Private
 Area 5,500 Sq. ft
 Services Interior Designing

The residence was designed by SSA to celebrate the fusion of spaces and style. The owners desired the finish that is reminiscent of natural surroundings. The design team took their request literally and metaphorically and designed spaces that were a seamless fusion of the outdoor space into interior. Through their knowledge of form, shape, colour and textures, the materials, furnishings and details are combined to create thoughtful, enduring interiors that, has a perfect balance between functionality and aesthetics.



The residence was designed to celebrate the fusion of spaces and style



Sayaji Hotels, Indore

Client Sayaji Hotels Ltd.
 Size 35,000 Sq. ft
 Services Interior Designing

Sayaji Hotels, one of the countries leading hotelier group was desirous of revamping their entire hotel premises at Indore including Guest rooms and public spaces. The Coffee shop created by SSA on the lower level is designed with the courtyard as a theme. Taking advantage of the high ceiling, the palm trees are strategically placed creating an outdoor ambience. More over the long stained glass panels acting as large windows of the buildings enhances the mood of the courtyard café.

The client was desirous to have an exclusive space for the guest room which would combine the ambience with privacy. Skillfully designed guest rooms allows the feel of spaciousness with free flowing spaces. The living area & bedroom is demarcated with the clear glass which gives the seamless experience of both the spaces while the rolling blinds provided let the spaces have their privacy. The bedroom and the bathroom are also designed in similar fashion.

The guestroom lobbies are designed in cheerful colours and smart artefacts to provide a contemporary image.



The palm tress and the large windows enhance the mood of the courtyard café



Kokilaben Dhirubhai Ambani Hospital

Client	Reliance ADA Group
Area	1,000,000 Sq. ft
Services	Consulting Architect & Interior Designing
Features	730 bedded inclusive of 130 ICU beds.

The hospital was initiated as a heart speciality hospital, by the noted cardiologist Late Dr. Nitu Mandke. With part of the core & shell complete the project was halted due to his untimely death, until taken over by the Reliance Anil Dhirubhai Ambani Group. It was then converted into a multispeciality health care unit, renamed as Kokilaben Dhirubhai Ambani Hospital and Medical Research Institute- 'Where Every Life Matters'.

Inspired by the reaction of the industrialist Late Dhirubhai Ambani on seeing the ICU when he suffered from hospitalisation during his last few days, the younger Ambani couple, Mrs. & Mr. Anil Ambani decided to provide the city with a facility which would not only pride itself as one of the best equipped facilities, but also be the one that takes away the stigma of being in a hospital. The group representatives approached SSA who were also part of the consultancy team at the time of Dr. Mandke & explained their desire of the same.

Using the theme of bringing together homes & hospital & working on the concept of "rejuvenation" we at SSA took up this challenging task. Drawing the inspiration from nature, its various colours & their therapeutic value in treating various ailments, we drew up a colour pallet across the building as per the functional uses of the areas.

This with the untiring spirit of Mrs. Tina Ambani along with the aim & philosophy to build not just a hospital but an organic entity, an institution that offers comprehensive healthcare services under one roof, creating a platform for transparent patient- centric care where 'Every Life Indeed Matters' has resulted in one of the finest State of Art health care facility spread over a 1 million sq.ft. of floor space with 730 beds, 115 ICU beds & numerous out patient departments.

Theme – Bringing together hospitals & homes



Concept – Rejuvenation



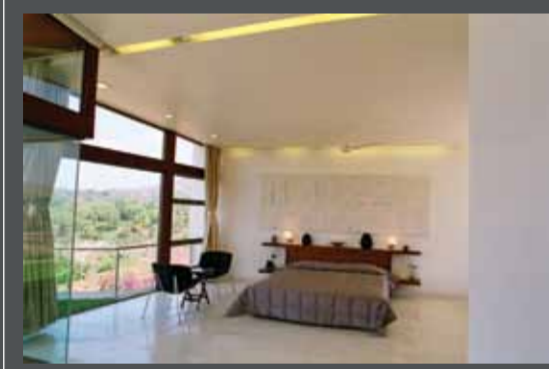
Inspiration – Nature's various colours & their therapeutic value

Weekend Villa

Client Private
 Size 10,000 Sq. ft.
 Services Architectural & Interior Designing

Situated at the crest of the Khandala hill, this luxurious 5 bedroom villa is on a magnificent site offering a panoramic view. The weekend getaway is admeasuring approximately 10,000 Sq.ft. The courtyard of the house is a bookend defining the villa façade. The entrance is a stuccoed wall with linear openings to maintain the privacy of the house. The extensive use of clear façade glass further enhances the feeling of "no walls" and openness while ensuring that the stunning view remains an eyeful from anywhere in the villa.

The villa porch extends forward to the living room, where the glass walls open into the garden & swimming pool at the lower level and the balcony at the upper level. Natural light pours into the bathrooms through strategically placed skylights. The different ambiances in the entertainment zones at the upper & lower level ensure unique mix of varying experiences.



The extensive use of clear façade glass further enhances the feeling of "no walls" and openness while ensuring that the stunning view remains an eyeful from anywhere in the villa

Galaxy Surfactants Ltd.

Client Galaxy Surfactants Ltd.
 Area 50,000 Sq. ft
 Services Interior Designing

Galaxy Surfactants Ltd. is a pioneer in producing chemical by-products and has exports to various countries. The Client's desire was to create their head quarters which would be functional, equipped with State of Art facilities and to have a world class ambience.

SSA team had a wonderful experience working on this project as Mr. Shashikant Shanbhag, one of the founders & Director was extensively involved in the whole process.

Galaxy has a 4 storey headquarters situated at Vashi, Navi Mumbai. To realize Galaxy's vision SSA anchored the structure with a décor that creates interactive spaces and environments with harmony. SSA developed a concept that translates the Director's philosophy that "Passion combined with Quality & Expertise leads to Excellence".

The creative solutions are complemented with art, artefacts and rugs. Careful selection of material and strategic use of vibrant colours has produced a dynamic experience to office spaces.

Passion combined with quality & expertise leads to excellence



Villa Interiors – Neelkanth Woods

Client Neelkanth Developers
 Area 9000 sq ft.
 Services Interior Designing

The Client brief was of a weekend home. The layout was changed to provide a more spacious and open look and translucent glass is used to divide the spaces. The large french windows of the living area expand miraculously into the deck. The deck is lined with sleeper wood and houses the grill, along with the landscaped area sets just the right tone for the barbeque zone.

The dark wood contrasts nicely with the white walls. Subdued lighting which is controlled by the digital lighting panel allows mood setting transforming the Villa ambiance from modern European to a casual, contemporary and comfortable experience.

Subdued lighting which is controlled by the digital lighting panel allows mood setting transforming the Villa ambiance from modern European to a casual, contemporary and comfortable experience



Apartment Building – Matoshree Heights

Client Matoshree Realtors Pvt. Ltd.
 Size 1,04,000 Sq. ft
 Services Architectural

Matoshree Heights is a 22 storied skyscraper located in Shivaji Park, Dadar which houses 1, 2 & 3 BHK premium apartments & luxurious penthouses.

Architecturally stunning, solid in its engineering & elegant in its detailing, Matoshree Heights is centrally poised to become the next landmark of the area. SSA has designed this building to withstand seismic forces, this "earthquake resistant edifice" ensures that you start off on solid footings. In addition, use of non-corrosive SRC steel for reinforcement, guarantees a long life of the superstructure.

Architecturally stunning, solid in its engineering & elegant in its detailing



Hotel Kohinoor Continental

Client Kohinoor Group
 Area 6,000 Sq. ft
 Services Interior Designing

Kohinoor Group appointed SSA Architects to redesign the 4th Floor at the Hotel Kohinoor Continental. SSA Architects were the natural choice to redesign this floor, having designed the Kohinoor Continental. With challenges of a steep time schedule to make the floor ready, SSA converted the existing banquet hall into 17 rooms.

A completely new look, to cater to the International traveller with the use of bold lines, solid colours and the innovative use of continuous forms like the lines of the study table translate to form a seating which further translates to a bed with side tables etc. The décor is kept simple with play of soft light to create an amiable ambience.

Use of bold lines, solid colours and the innovative use of continuous forms



Corporate IT Park for Neelkanth

Client Neelkanth Developers
 Size 700,000 Sq.ft
 Services Architectural

For the design of a new corporate park to house the corporate offices of the growing IT industry for Neelkanth Developers, with amenities that include health club, boutique shop, restaurants, cafes, a mixed use complex, the Architect's objective was to create a human and diverse spatial programmatic working atmosphere in the developments of 7 Lac Sq.ft

The design has open terrace at every level to ensure an open feel to the offices and a podium garden has been provided as an additional recreational space to re-energize the users.

Open terraces and podium garden to re-energize the user



Urban Planning – Lonavalley

Client Lonavalley Developers
 Size 250 acres
 Services Urban Planning

The client is desirous of developing a town ship on this 250 acres plot with mixed use development.

The shape of the plot is asymmetrical. A wave shaped layout is designed for the residential plot with wide green spaces on either sides. The self contained development will have hospital, education complex, auditorium, convenience store, shopping plaza, club house, bungalow plots, service apartments, recreational areas.

The thrust is on the development of the Green Belt to add aesthetic value to the area.

The state of art infrastructure development is being planned to ensure wide roads, modern sewage treatment plants, solid waste management systems, water pipelines.

Energy conservation will be a priority feature through solar panel, rain water harvesting, recycling of water, vermicomposting etc.



Urban Planning – Khalapur

Client Neelkanth Vinayak Realtors
 Size 225 acres
 Services Urban Planning

SSA's approach for the project was to create urban communities that are more than a response to the basic requirements of food shelter & security. The SSA group focuses on the spaces in between the buildings to harmonize the Architecture, infrastructure and open space. This creates urban experiences that support our social & physical needs, in a plot that was asymmetrical.

The master plan houses a variety of open spaces with parks that allow for active recreation, green ways, bikeways, play ways, passive landscape and preservation zone. The plan includes row house, individual bungalows, residential complex, club house, low cost housing, educational complex, hospital, commercial complex, convention centre, hotel, retail and recreational gardens.

SSA has priority on energy conservation through solar panels, rain water harvesting, recycling of water, vermicomposting etc.



GKKSSA Consultants Pvt. Ltd.

GKKSSA Consultants Pvt. Ltd. is a joint venture between SSA Architects and gkkworks, a leading US based Architectural firm which has been listed for three consecutive years on Zweig White's Top 100 Fastest Growing Design Firms & has also been ranked by Engineering News Record as one of the US top 100 construction Management firms & Top 40 Program Management Firms.

GKKSSA CPL is based in Pune with a team of 50 + professional including Architects, Interior Designer, 3D visualizers and other support staff, offers

Architectural, Interior Designing Services & Engineering services. We at GKKSSA CPL also offer comprehensive suite of AE support services to global Architectural & Engineering firms.

GKKSSA has a three Studio Structure patterned model for India, US, and Middle East projects. Each studio is headed by a Studio Head and is supported by Project Managers and other professionals. The team is also developing capabilities in latest Architectural software such as 'Revit'.

MIDDLE EAST STUDIO

At the Middle East studio, the most exciting work taking place is knowledge based design requiring highly specific expertise across building types. At our Middle East studio we have provided services to the leading Architectural firms of Middle East such as Diar Consult for Al Salam City, Sandoval Gardens, Dubai Sports City which included Victory Heights, Canal View, Lake view totally admeasuring 4 million sqft

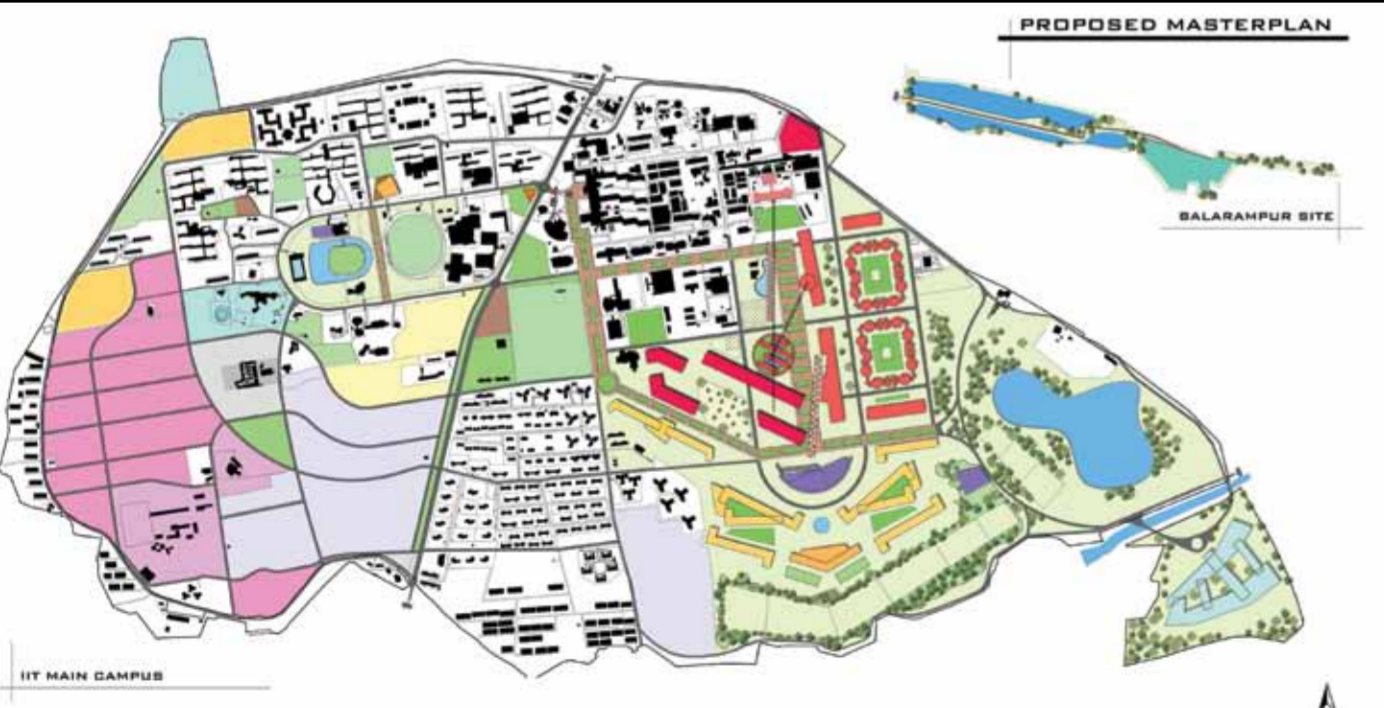


GKKWORKS STUDIO

The gkkworks studio has been rendering AE support services since over a decade. These teams work in close co-ordination with each other due to which a seamless methodology between two firms has evolved. Some of the prestigious projects for which services have been rendered are Chaffey College, Riverside City College, Loma Linda Medical Centre, Pomona Valley Hospital and many more.



LOCAL & JOINT WORKS STUDIO



The Joint Works/ Local studio is developed with a philosophy to create a powerful combination of gkkworks international experience and high quality design skills which are complemented by SSA's strong local presence and equivalent engineering & able design skills.

The special efforts spearheaded by Praful Kulkarni – President + CEO, David Hunt – VP, Shiv Singh – Project Director & Mahmoud Mehrabian – Design Director has resulted in GKKSSA bagging a 1200 acre IIT Kharagpur project.

GKKSSA has won the competition project & has recently rendered the Master Planning services to IIT Kharagpur for its 1200 acres campus. The Rs. 1000 Cr. project includes the infrastructure upgradation of the entire campus and the buildings academic blocks, students & staff housing, research facilities, admin blocks, banks etc admeasuring 2.5 million Sq. ft. The entire work is scheduled to be completed in 2 phases. Currently we are rendering our Architectural services for the student's activity centre, students amenities centre, central library building which is the part of Phase – I. The entire Phase – I is expected to be completed by August' 2011, which is the Platinum year for the historic IIT Kharagpur.

SSA Engineers



SSA Engineers has been successfully identifying challenges and resolving client's concern through their Project Management / Construction Management Services.

With a strong Engineering & Architectural team, SSA has successfully completed the Phase – I of Kohinoor City. Phase – I comprising of 420 apartments with covered car parking, recreational areas, well landscape and hardscaped areas, State of Art infrastructure etc was handed over to the Client's in the year 2008.

SSA Engineers with its strong team of qualified professionals who are highly client and project focused, with long list of interrelated business operations from the start of the project such as pre project feasibility studies, programming, project management, field operations, detailed well thought construction methodologies till the end of the project. With increased demands on cost saving, SSA Engineer's vision is to provide quality services for the project within the stipulated time and cost.

We are currently involved in rendering PM Services to Kohinoor City project that is spread over 30 acres and has over 5 million Sq. ft construction. This project includes residential apartments, education complex, LEED platinum rated hospital, LEED gold rated mixed use commercial & retail complex, club house, hotel & recreational facilities.

Some of the other prestigious projects where PM / CM services are being rendered are Neelkanth Palacia, a Commercial Complex admeasuring a million Sq. ft. with 2 basements, ground + 8 storey's structure & high quality, detailed services planning. The project is expected to be completed by 2011.

SSA Engineers is rendering services for a cost effective & affordable housing scheme admeasuring approximately 2,300,000 Sq. ft. for Ravechi Developers. The development has Sate of Art infrastructure that includes a 27 meters 'Post Tension Bridge' that is one of its kind in the city.

Aashirwad, an upscale apartment building is a ground + 22 storey structure for housing the IAS officers & bureaucrat admeasuring approximately 100,000 Sq. ft. is also a part of SSA Engineers portfolio. SSA Engineers is well poised to provide & render cutting edge solutions, accept challenges and create new paradigms for their clients.



SSA Architects

SSA – To support our Client's markets & service needs in organized practices of Architecture, Interior Designing, Project Management, each charged with sharing innovation and expertise through an integrated cross office, practice exchange. This dynamic network ensure that new insight inform the firms collective knowledge, creating value for all our clients, industry leaders and startup alike.

SSA, a multidisciplinary company in past 2 years has rendered services to numerous prestigious projects in various disciplines ranging to 15 million Sq. ft with the support of 180 professionals.

ARCHITECTURE

At SSA, we believe that Architecture and Engineering is a cohesive, seamless activity hence we have a one stop centre offering Architectural & Engineering Services.

SSA Architect's aim and focus is to develop a design solution that is highly creative, iconic in nature whilst meeting the client's functional need and ensuring sustainability.

SSA Architects helps to shape the human experience, improve the quality of the built environment and also takes a step towards conserving earth's resource. Our focus and aim is to cut through the complexity to make life easier & better for people and hence the buildings should serve a higher purpose.

SSA team is conversant with energy and environmentally efficient design, with in house expertise to provide sustainable solutions for all projects.

SSA is already providing services to ensure LEED Platinum & Gold certification.

INTERIOR

Interior designing is primarily Detailed Architecture. Through a deliberation process with the clients our designers create dynamic, breath taking environment that promote the client's identity while catering to their functional needs.

Through a collaborative process we ensure that good ideas are translated into great spaces. We create inspiring environments ensuring our ideas solve the business challenge & create real value.

PROJECT MANAGEMENT

Since real life is never linear, a strong vision and a flexible approach give the master construction plan the resilience they need to guide their development. We work as a team with our clients using the resource we have throughout the company to ensure their success. As Urban Designers & Planners, we know how to bring forward the experiential attributes that ensure the project is completed as per the designer's vision on time, within budget and with the required quality.

Within the firm we have engineers, pre construction and construction professionals, all the necessary resources aimed at identifying the problem and providing the solution. Our previous record and inherent ability to overcome challenges provides the security that Client's needs for their projects.

SANDEEP SHIKRE & ASSOCIATES



Mumbai Office:

202-204,
Prabhadevi Industrial Estate,
Veer Savarkar Marg,
Prabhadevi,
Mumbai 400 028 India
Tel: 91 22 6629 6500
Fax: 91 22 6654 6505

www.ssaarchitects.com