



# FORM



*At SSA, as Architects, designers and planners we continue to put your dreams into reality. From designing small houses that are as big as 5,000 Sq.ft. to creating new cities, we do it with pride, passion and commitment.*

*At SSA we take pride in meeting and exceeding the needs of our clients and our work reflects our commitment to sustainability where our practice philosophy is to be nimble, facile, fluid, flexible and continually moving forward.*

*A glance at yet another FORM gives an indication of the diversity of our services in addition to glimpses of the year that has been 2009 where it all begins with wishes and visions.*



*Kohinoor Hospital has been awarded with Platinum Rating under the "Leadership in Energy and Environment Design" (LEED) Green Building Rating System.*

**INSIDES**

- 1 Kohinoor Commercial Complex - I
- 2 Kohinoor Residential Phase - III
- 3 Ashirwad Co-op. Housing Society
- 4 Rama Niwas
- 5 Urban Planning - Panvel Precinct
- 6 Matoshree Pride
- 7 Matoshree Kunj
- 8 IIT Kharagpur
- 9 Courtyard Marriot - Hyderabad
- 10 Hello Resorts
- 11 Kohinoor Hospital
- 12 Institute of Management
- 13 Club at Andheri
- 14 4 Star Hotel
- 15 Sayaji Hotels Ltd. - Pune
- 16 Gateway, Taj - Surat
- 17 Banquet for Palai Jyoti
- 18 gkkSSA CPL, Pune
- 19 MIG Cricket Club
- 20 Club for Neelkanth Greens
- 21 Market City Mumbai
- 22 Market City Pune
- 23 Project Management
- 24 SSA Architects



# Kohinoor City Commercial Complex - I

Project Type	Mixed Use Development
Client	Kohinoor Planet Constructions Pvt. Ltd.
Area	858,000 Sq.ft.
Services	Architectural, Interior Designing and Project Management Services

The client desired a structure which would be iconic whilst uncompromising the functionality. A design that would be a conducive environment for corporate and retail space that would work today and tomorrow.

The mall is a multi use structure with minutely planned services which caters to the retail stores, super stores, multiplex, restaurants, convenience shopping, office block, food courts.

The office & hotel floor have dedicated elevators to ensure smooth transmission. The most unique & striking features of the mall is its 300 mtr frontage.

A contemporary structure of glass & stone, SSA has created a building with a kaleidoscopic facade which

is an entirely different character from the adjoining buildings. The curving section of the facade accentuates the aesthetic appearance whilst the entrance canopy with its huge steel frames that look and feel strong with a strong presence of metal.

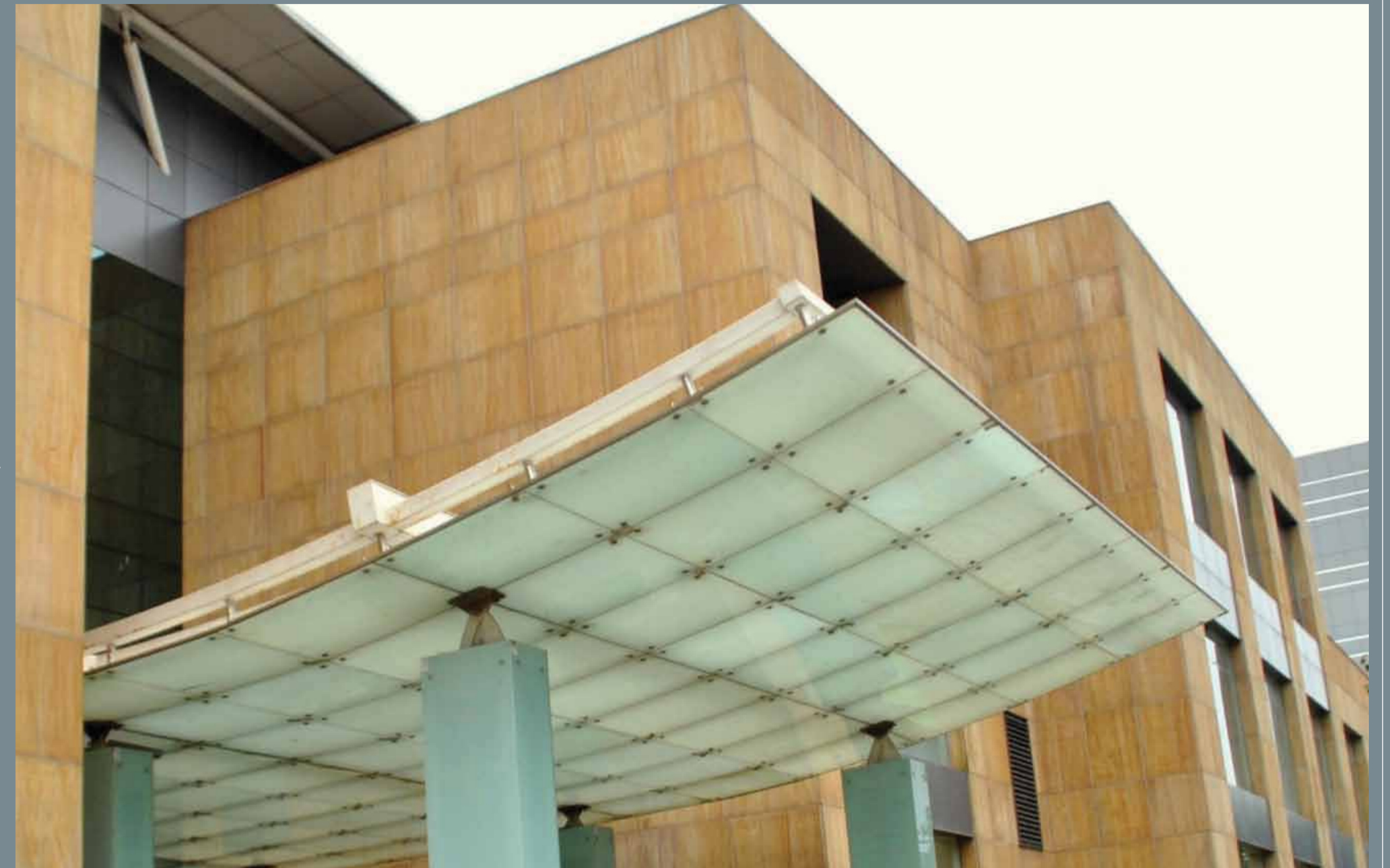
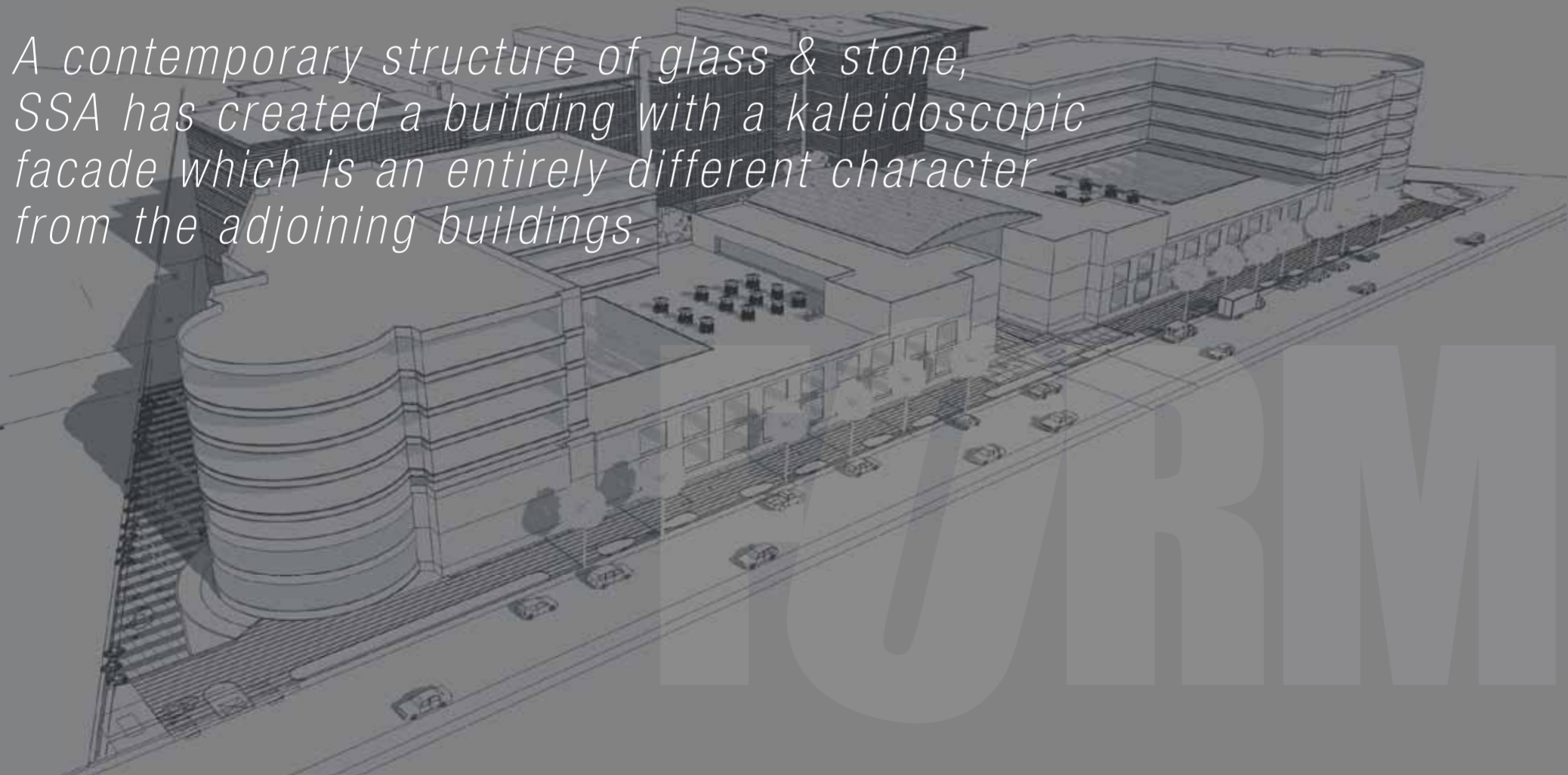
There is a huge amount of linearity in the floor plate that is a mathematically generated architectural idea. The wall has been designed from inside out that corresponds to a continuous linear facade giving the retail owners a medium to display which is 300+ mtrs long frontage.

The optimized structural flexibility allows the housing of small to large retail stores at the lower level, A 6000+ Sq.ft. Banquet on the 1st floor along with various sized offices from 1,500 Sq.ft. to 30,000 Sq.ft. large office spaces at the upper levels.

The building is designed with an intelligent facade and energy efficient mechanical and electrical systems that enabled it to be a "GOLD" certificate LEED building.



*A contemporary structure of glass & stone, SSA has created a building with a kaleidoscopic facade which is an entirely different character from the adjoining buildings.*





# Kohinoor City Residential Phase III

Project Type	Residential
Client	Kohinoor Planet Constructions Pvt. Ltd.
Area	380,000 Sq.ft.
Services	Architectural and Project Management Services

A 380,000 Sq.ft housing development has been designed for Kohinoor Group in Mumbai.

The master layout has 8 apartment buildings housing 272 family units, with a central recreational podium.

The 1st floor units open out to terraces which are connected to the podium. The podium terrace dually acts as recreational space whilst housing the parking needs below.

The apartments are designed as ready to move in modules which include amenities like state of the art modular kitchens, video door phone, geysers, water purifiers etc. The cutting edge infrastructure developed include grey water management systems, upgraded water, sewage, electric and gas lines to meet current and future requirements of the complex.



*The podium terrace dually acts as recreational space whilst housing the parking needs below*

# Ashirwad Co-op. Housing Society

Project Type	Residential
Client	Ashirwad Co-op. Hsg. Soc. Ltd.
Area	83,000 Sq.ft.
Services	Architectural, Project Management and Liasoning Services

The residential project is a 22 storey apartment building with 2 below grade parking facility. The project is located on reclaimed land which required impact pilling. The apartment building with 3 bedroom units offers upscale finishes and amenities.

This is a 22 storey tall residential building with ready to start apartments and elegant amenities. The engineering challenge was to ensure an efficient structural grid with climate responsive and environmentally friendly shading devices.

*Efficient structured grid with climate responsive and environmentally friendly shading devices*

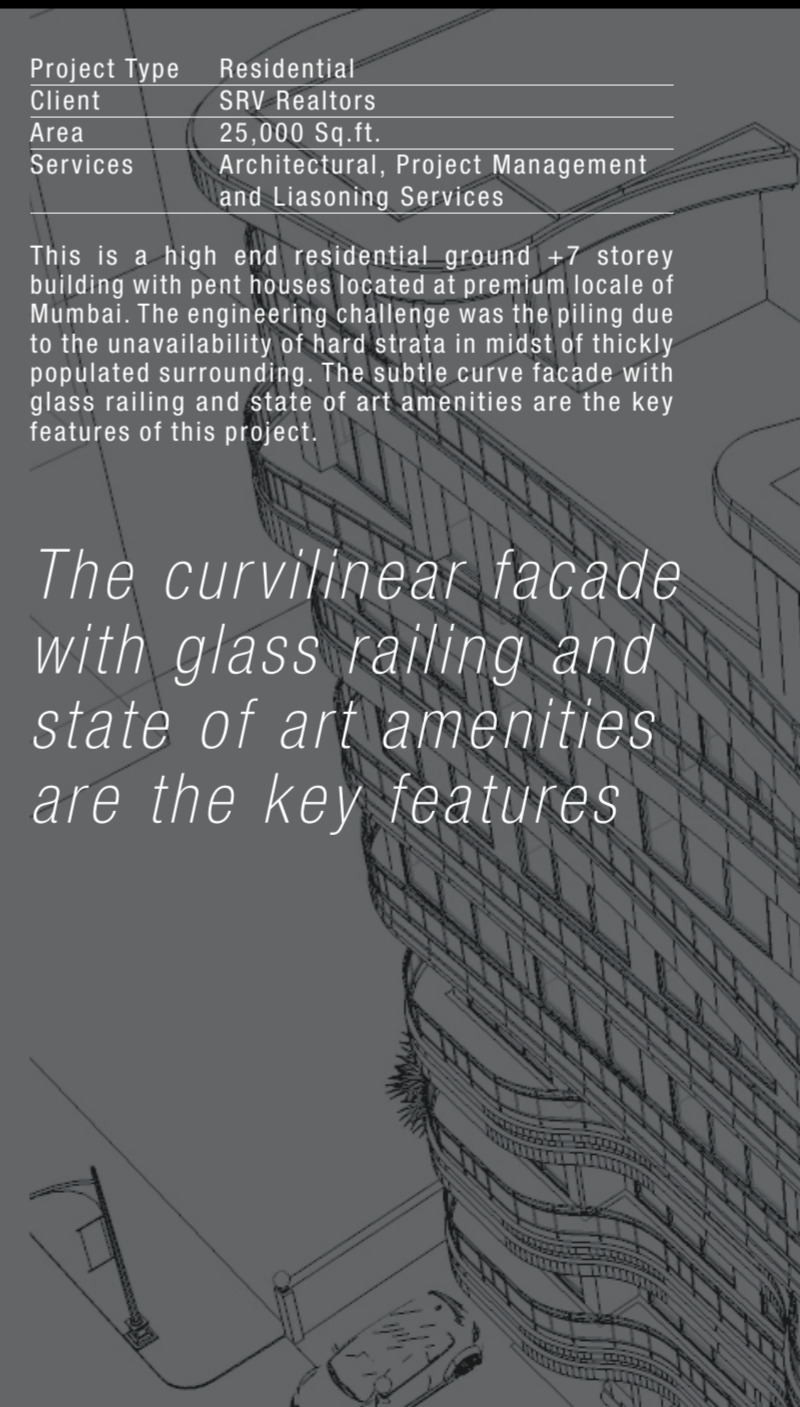


# Rama Niwas

Project Type	Residential
Client	SRV Realtors
Area	25,000 Sq.ft.
Services	Architectural, Project Management and Liasoning Services

This is a high end residential ground +7 storey building with pent houses located at premium locale of Mumbai. The engineering challenge was the piling due to the unavailability of hard strata in midst of thickly populated surrounding. The subtle curve facade with glass railing and state of art amenities are the key features of this project.

*The curvilinear facade with glass railing and state of art amenities are the key features*





# Urban Planning - Panvel Precinct



Project Type	Traditional Neighbourhood Development
Client	Nilayami Realtors Pvt. Ltd.
Area	145 Acres
Services	Master Planning

The Tara Masterplanning Projects is a 145 acre traditional Neighborhood Development (TND) near Panvel city in Maharashtra State (India). As such, the project represents first of the kind development in the region whose plan is compliant to the TND principles in Maharashtra state.

The neighborhood includes 580 housing units distributed between four transect zones (R1, R2, R3 and R4). In keeping with the intent of TND's principles, the four transect zones includes a mix of housing and green spaces. Comprehensive Masterplan includes live - work units, light retail commercial, single - family dwellings, rentable cottages, open air Sunday market, greenway, and outdoor sports bay. All are connected through an efficient network of motorways, pedestrian paths, and boulevards that provide internal circulation.

The Masterplan promotes sustainable approach to energy creation. Solar energy use, wind energy use, and ground water recharge being the highlights of the masterplan. The democratic iron-grid pattern and the tree - lined sidewalks foster an intimate, safe and green neighborhood setting, while discouraging speeding, as many trees as possible will remain in place to enhance the community's park - like setting, which includes green paths and open spaces for residents to enjoy. Most importantly, the Retail Commercial (RC1) strip, Convention Centre located within the Sports Bay Zone, and the Sunday Market will serve as the community's focal points, all within walking distance of residents.



*The masterplan promotes sustainable approach to energy creation including solar energy use, wind energy use and ground water recharge*

# Matoshree Pride



Project Type	Residential
Client	Matoshree Infrastructure Pvt. Ltd.
Area	250,000 sqft
Services	Architectural Services

This is a redevelopment project located at the heart of Central Mumbai, Parel. The complex has 2 towers, Tower -1 houses the rehabilitated tenants in a ground + stilt +14storey tower with state of art elevators and MEP systems. Adjoining is Tower -2 which has basement +4 storeys parking and from 5th to 18th storey are 2 / 3 BHK apartments with contemporary amenities. The straight lines are interrupted at the corners with curves which add a gentle grace to the facade.

*Straight lines are interrupted at the corners with curves which add a gentle grace to the facade*

# Matoshree Kunj

Project Type	Residential
Client	Matoshree Infrastructure Pvt. Ltd.
Area	60,000 sqft
Services	Architectural and Liaisoning Services

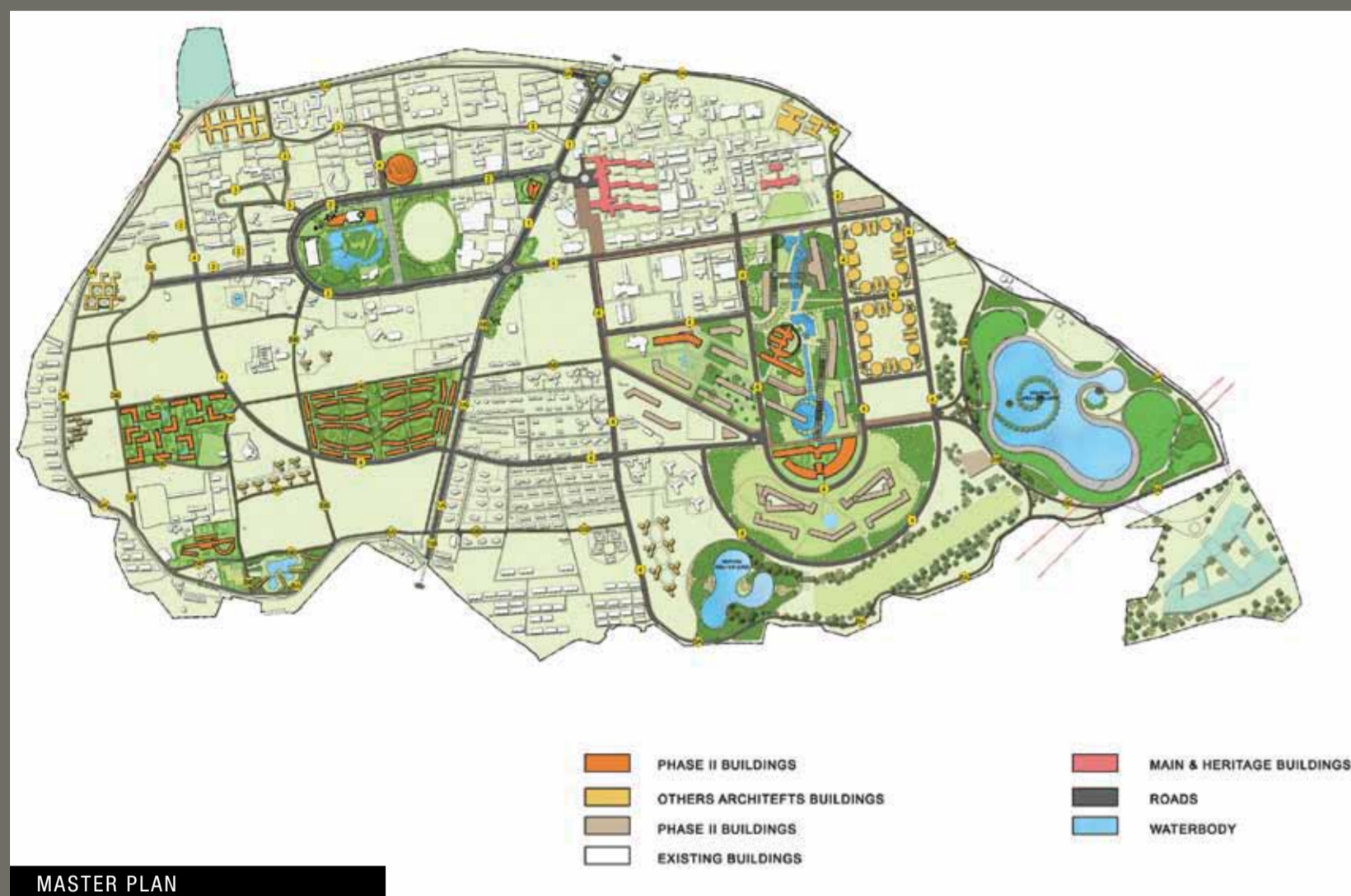
This SRA redevelopment is in the heart of Mumbai suburbs - IRLA, designed along tall straight lines. Simple lines giving it a simple sophisticated look. The existing tenants are housed in the 7 storey building and the adjoining tower houses a basement + stilt +12 storeys which have 2 / 3 BHK apartments. The vertical transmission and MEP systems are state of the art.

*The vertical transmission and MEP systems are state of the art*





## IIT Kharagpur A gkkSSA Consultants Pvt. Ltd. project



MASTER PLAN



CONVENTION CENTRE



LIBRARY BUILDING

Project Type Educational Complex  
 Client IIT Kharagpur  
 Area 1,200 Acres  
 Services Masterplanning, Architectural & Project Management Consultancy

are rendering our Architectural services and construction management services for the student's activity centre, students amenities centre, central library building which is the part of Phase - I. The entire Phase - I is expected to be completed by August' 2011, which is the historic Platinum year for IIT Kharagpur.

gkkSSA has won the competition project & has recently rendered the Master Planning services to IIT Kharagpur for its 1,200 acres campus. The Rs. 1,000 Cr. project includes the infrastructure upgradation of the entire campus and the buildings of academic blocks, students & staff housing, research facilities, admin blocks, banks etc admeasuring 2.5 million Sq. ft. The entire work is scheduled to be completed in 2 phases. Currently we

Creating world-class facilities for the engineering education excellence on an eye-catching, 1200-acre campus, the center is envisaged as a "technopolis... a shining technology city."

The walkable education community with "collaboration plazas" effectively pulls together the separate buildings, bringing people face to face. An innovative practical framework for sustainable development is also defined, with structures that are flexible and adaptable.



LABORATORY BUILDING



SIGNATURE BUILDING



CONVENTION CENTRE COURTYARD



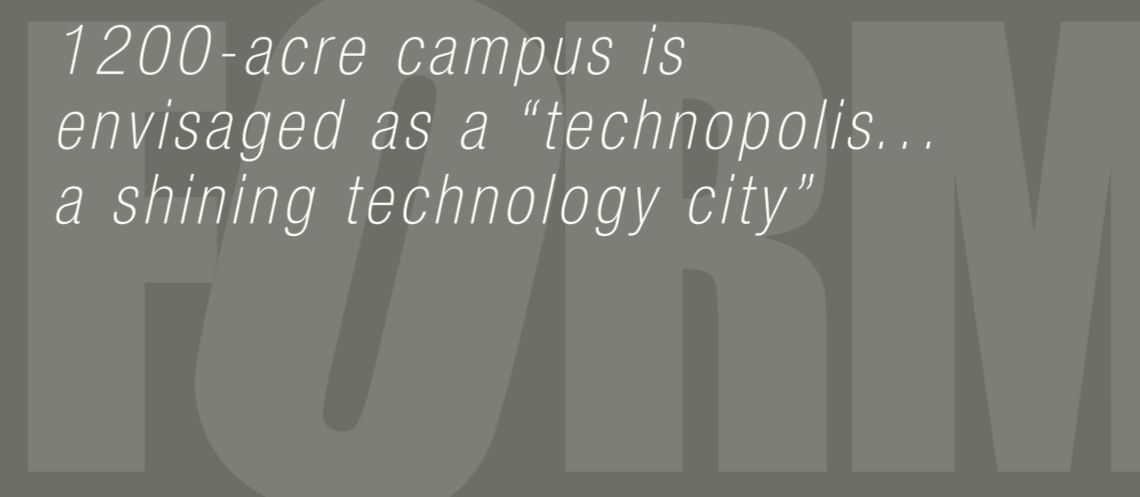
CONVENTION CENTRE



LIBRARY BUILDING



LIBRARY BUILDING



SIGNATURE BUILDING

1200-acre campus is envisaged as a "technopolis... a shining technology city"



# Courtyard Marriot - Hyderabad



The design expresses "iconic" verticality that echoes the spirit of the "Charminar" combined with architecturally modulated facades

Project Type	Hospitality
Client	Future Infra India Pvt. Ltd.
Area	250,000 Sq.ft.
Services	Architectural Services

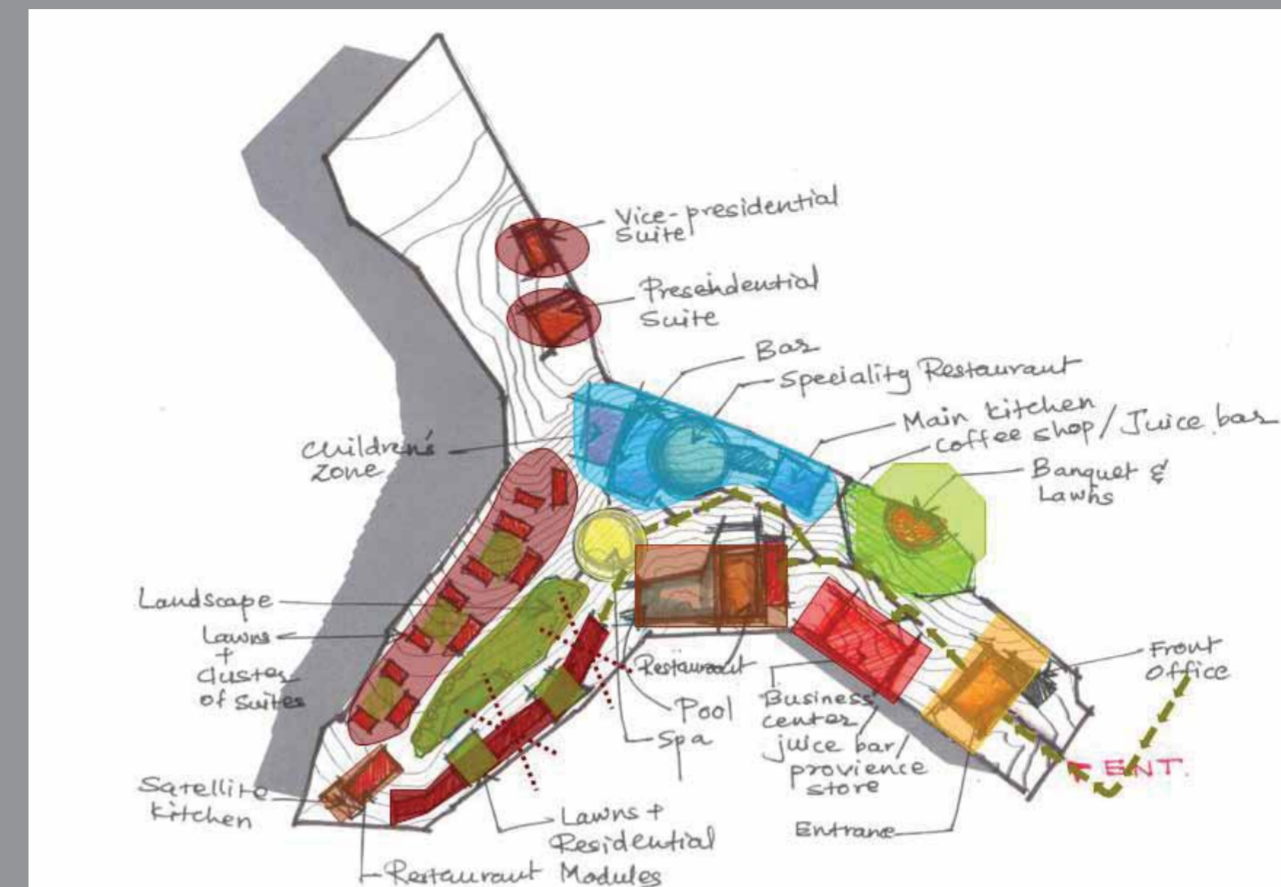
This 200+ keys hotel is designed to be a world class business hotel. This iconic 18 storey high rise in midst of the electronic city of Hyderabad is all set to be the new hotel on the block.

The design expresses "iconic" verticality that echoes the spirit of the "Charminar" combined with architecturally modulated facades defined by changes in rhythmic pattern of step terraced landscaped areas every 15 mts. making it a green building. The challenges of the harsh climate are countered by the intelligent building façade and shading devices.

The hotel includes fine dining restaurants, coffee shop, health club, swimming pool and business centre to pamper to the guest wishes.



# Hello Resorts



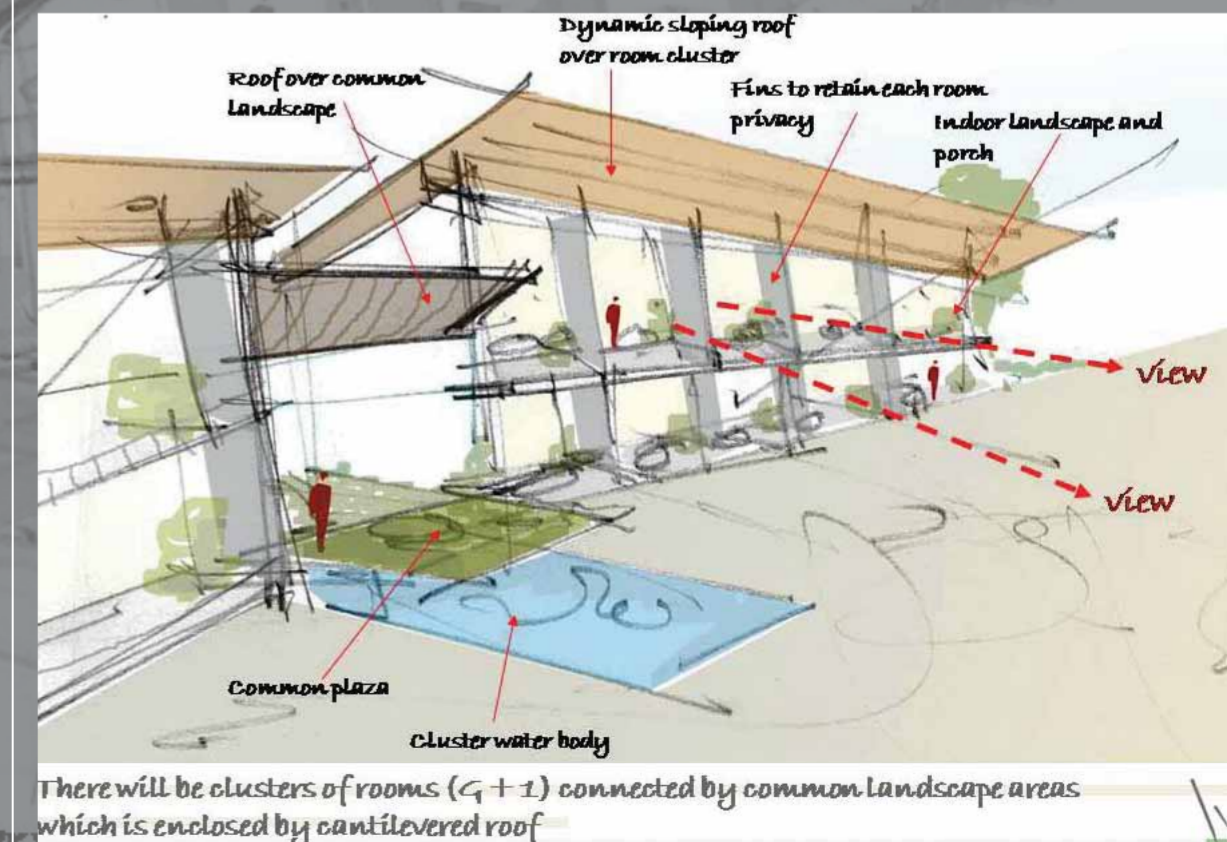
The unique design mix of fine dining spaces, open walkways, private water garden, sundecks, enchanting private villas with open to sky bathrooms transforms the space into a dream destination



Project Type	Hospitality
Client	A Leading Hotelier
Services	Architectural Services

At Hello Resort, located at the outskirts of Pune, we drew on our experience to create a compelling resort destination. The inspiration was a droplet of water over a leaf – that is enclosing yet transparent which retains the beauty of nature whilst creating secure places. The visual translation is seen in the optimally used glass facades that allows the nature to flow into the confined spaces.

The unique design mix of fine dining spaces, open walkways, private water garden, sundecks, enchanting private villas with open to sky bathrooms transforms the space into a dream destination. Every villa, suite and room is plushly and elegantly designed to complement and blend into the surrounding that communes with the natural surrounding.



There will be clusters of rooms (G+1) connected by common landscape areas which is enclosed by cantilevered roof



# Kohinoor Hospital

Project Type	Health Care
Client	Kohinoor Hospitals Pvt. Ltd.
Area	235,000 Sq.ft.
Services	Architectural, Interior Designing and Project Management Services

For Asia's 1st Platinum rated LEED hospital we aggressively researched for environmentally appropriate materials and equipments to ensure that our client's vision is attained in a cost effective manner. The project's environmental goals were established early in the design process and monitored at each phase and every milestone.

Mr. Unmesh Joshi - CMD, Kohinoor Group, who has an Architectural degree says that the motivation to pursue LEED certification is "Being Green has profound effect on the healing process and what's good for the environment will be good for our patients". Located at the heart of the Central Suburbs in Mumbai the financial capital

of India is fast emerging multi specialty hospital with 150 beds. With 2 tier basement + 5 floors, it is well equipped with state of art medical equipments, surgery suites, 4 operation theaters and 25 intensive care beds. Room modules are ranging from 8 bed pods, twin sharing rooms, single patient rooms suites etc. The hospital has the pathology department, radiology department, dialysis department, alongwith a separate wing for the gynaecology and IVF department.

This facility is designed with the prime focus to add to the patient's comfort whilst optimizing on the smooth and efficient operation of the hospital.

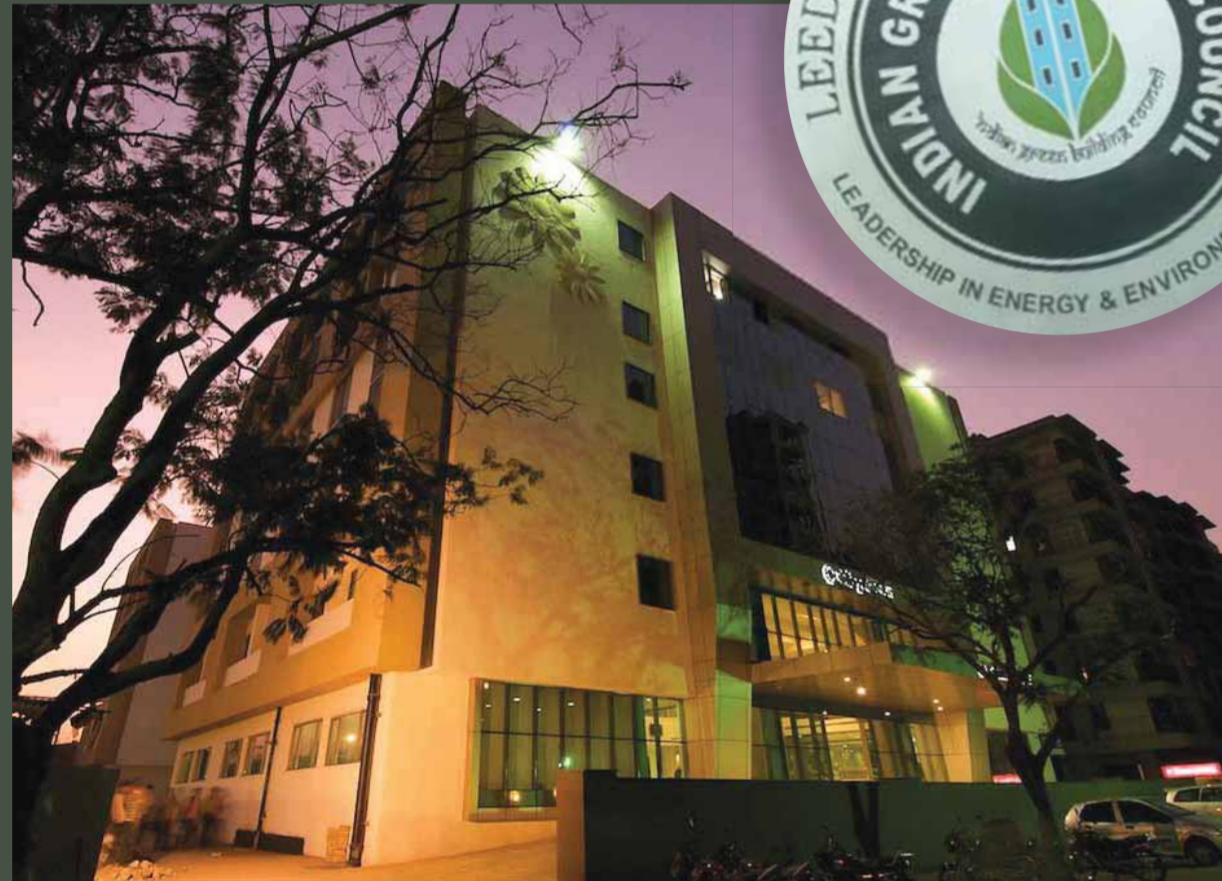
The consulting rooms are designed to exude a cheerful atmosphere to further help distress and relieve patient anxiety.

A lot of attention has been paid to the minutest details while designing to ensure that the efficiency of the space is maximized.

The building is Platinum certified and designed with ASHRAE, EC-BC standards.



KOHINOOR HOSPITAL HAS BEEN AWARDED WITH PLATINUM RATING UNDER THE "LEADERSHIP IN ENERGY AND ENVIRONMENT DESIGN" (LEED) GREEN BUILDING RATING SYSTEM.



*This facility is being designed with the prime focus to add to the patient's comfort whilst optimizing on the smooth and efficient operation of the hospital*





# Institute of Management (A competition project by gkkSSAcpI)

Project Type Educational  
 Services Master Planning and Architectural Services

gkkSSA has prepared a well thought master plan for a management institute situated at the outskirts of Goa, in a serene hilltop location.

The master layout has strategically zoned complexes which are oriented to be climate responsive.

The seamless integration of academic building, hostel, amphitheatre, convention centre, dining area with the outdoor active recreational areas further enhances the interaction between the occupants.

The orientation and placement ensures that the panoramic view is exploited to the fullest. The design is inspired by both the local Portugal Architecture and the need of interactive space, and led to the shortlisting of this design in the design competitions.



*The design is inspired by both the local Portugal Architecture and the need of interactive space*



# Club at Andheri



Project Type Hospitality  
 Area 60,000 Sq.ft.  
 Services Architectural, Interior Designing and Liasoning Consultancy

The Club at Andheri is designed to create a recreational pause in the midst of a busy Mumbai suburbs. The layout was categorized into 3 distinct zones which are indoor sports, leisure activities and outdoor sports and commercial public activities whilst, the back of house services are optimized as per their functionality to optimize the spaces.

*The Club at Andheri is designed to create a recreational pause in the midst of a busy Mumbai suburbs*

# 4 Star Hotel



Project Type 4 Star Hotel  
 Size 100,000 Sq.ft.  
 Construction Cost Rs. 60 Cr.  
 Services Architectural and Interior Designing Services

A 100,000 sq. ft., 300 key luxurious 4 star hotel with an estimated cost of Rs. 60 Cr. being designed for the renowned group in hospitality industry.

The client brief was to design the hotel for the very high end guests, who are extremely particular of every minutest detail. The lobby is treated as a transit zone to go either to the banquet and partly lawn, to the guest rooms or to the restaurant / coffee shop.

The rooms have been designed keeping every smallest detail in mind, where superior aesthetic and functional capability seamlessly blend. The room is designed as a single module where the functional areas are identified either by low height partition or change in flooring.

*A seamless blend of superior aesthetic and functional capability*





Sayaji Hotels Ltd. - Pune

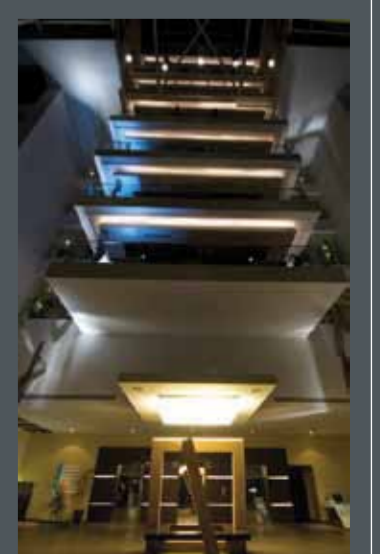


Project Type	Hospitality
Client	Sayaji Hotels Ltd.
Area	130,000 sqft.
Services	Interior Designing Services

shapes on the floor. The accentuated spaces though simple in design are very sophisticated. The rooms needless to say are well designed with the optimal utilization of space and equipped with state of art touch panels, mood lighting, foot massagers etc. It's difficult to miss 'Portico' the multi cuisine fine dining restaurant with its leit - mortif jali design - a fusion of traditional design in modern steel material. The swank restaurant extends from the indoors to the outdoors with the extended rafters giving it a continuous look. Portico has a magnetic allure with its antique beige marble flooring and dark walnut tones. The conference hall caters to the business needs where the richness of the materials is emphasized by the green and beige panels on the walls. The Sayaji - Pune is an experience set amidst contemporary styling that is sure to leave a mark on your design sensibilities. "The building complements the architecture as much as the architecture complements the art."



*The building compliments the architecture as much as the architecture complements the art*





# Gateway, Taj - Surat

Project Type	Hospitality
Client	JHM Hotels
Area	120,000 Sq.ft.
Services	Executive Interior Designing Services

SSA in coordination with International Architects Duncan and Miller, USA had developed concept for Interior Design of public spaces for Taj Gateway Hotel. The spaces include entrance lobby, tea lounge, and speciality restaurant, outdoor cafe, and retail corridor, ball room, meeting rooms, spa, business center, concierge lounge and public toilet blocks. SSA took forward these concepts to be converted into design development, tender and GFC packages.

The detailed designs of the public spaces at Taj Surat were carried forward by SSA and the result was a blend of the old with new, western with local.

At the tea lounge you will notice "Tree of Life" mural that catches your attention. Each of the public spaces of the hotel has its own layouts and theme and they all share a palette of materials including glass, wood, natural stone flooring, wooden partitions for screening giving it a touch of contemporary warmth. The outdoor cafe overlooks the river that flows parallel to the property giving it an outdoorsy feel. The ambience in the spa is built up to realize guest expectation and give a whole new meaning to the "spa experience." The ballroom is completed in subdued tones of brown & ochre to evoke a subtle warmth.

*The refurbished public spaces create an welcome ambience that beckons you in to the hotel*



# Banquet for Palai Jyoti

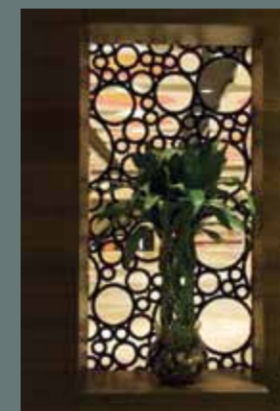
Project Type	Hospitality
Client	Palai Jyoti Banquet Pvt. Ltd.
Area	25,000 Sq.ft.
Services	Interior Designing & Project Management Services

The Banquet Hall located at Kohinoor City, 15 minutes away from the Bandra Kurla Complex, is designed to make it a popular destination for conferences, weddings and parties for upto 1500 guests.

The exquisite leit motified flooring with the neon esque ceiling combined with the State of Art mood lighting add drama to the ambience that make it an experiential rich hospitality space.

At SSA, our extensive experience and a 360 degree approach, in working with client, contractors and consultants, coupled with our investment in research and recourse in all aspects of interior fit out projects, allows us to understand user requirement and their patterns so we can translate their identity into quality spaces.

*Beige matt walls accentuated with brightly colored panels peppered across the banquet create an arresting visual*





gkkSSA CPL, Pune



The gkkSSA studio is strategically divided into 3 levels

Each floor plan has been conceived with a central core and peripheral studio where in the peripheral, the studio head, the visitors' area and café for the employees are located.

Conceptualized as a blank sheet of paper on which ideas turn into reality. This concept was translated by painting the vertical spaces in white and then the "canvas" was prepared with images

working models, mural, structural graphics to add color and zest to the studio. The continuity of a blank canvas was further emphasized by ensuring that all partitions created were transparent in nature without the use of solid mass partition. This was achieved by glass, tensile changeable vinyl panels. The white matte finish complements the minimalistic furnishing and spaces, following the lines of contemporary architecture it is styled with glass, steel and wood.



*Conceptualized as a blank sheet of paper on which ideas turn into reality*





MIG Cricket Club



Project Type	Hospitality
Client	MIG Cricket Club
Area	85,000 Sq.ft.
Services	Interior Designing & Project Management Services

SSA conceptualized the lobby of MIG Cricket Club along the simple geometric shape of a circle. The circle embodies a wide spectrum of meaning but the one that fits the best is that echoes the shape of a "Cricket Ball".

The curvilinear shapes breaks the monotony of the space and the warm dark colors of the wood create a warm, welcoming ambience. The lobby spills into the swimming pool area and the clear glass door, seamlessly invite the nature into the lobby. The color palettes are warm reds with brown and white to create drama in the lobby.

Undoubtedly, one of the most popular hotspots of MIG Club is "Cloud 9". Inaugurated almost a decade ago, the refurbishment had been on the radar since the past couple of years.

The existing black flooring was complimented with floating black panels in the ceiling. This created an infinite space between the entrance stone portal & the service area portal, along with the mystical feel created by the background champagne leafed ceiling. These floating panels are acoustical in nature, absorbing 80% of the sound. The feel was further accentuated by taking direct focus lighting on each table top as highlights for the featured stone clad columns. These lights are with the latest LED technology so as to reduce the heat & are extremely energy efficient.

The entire space with its warm colour scheme and diffused ambient lighting creates calm ambience which is welcome, after a long stressful day.

The outcome is a playful, contemporary bar to create memorable patron experience.



*The curvilinear shapes breaks the monotony of the space and the warm dark colors of the wood create a warm, welcoming ambience*





# Club for Neelkanth Greens

Project Type	Hospitality
Client	Neelkanth Mansions and Infrastructure Pvt. Ltd.
Area	30,000 Sq.ft.
Services	Architectural, Interior Designing & Project Management Services

Nestled with the backdrop of the Sanjay Gandhi National Park in the midst of Thane is a 30,000 sq.ft. club for the 900+ residential units of Neelkanth Greens.

The Neelkanth Green Club House boast of a swimming pool, heath club, state of the art Gymnasium squash court, badminton court, T.T. room, carom room, pool table room etc, landscaped terrace garden designed with a concept of Mediterranean Style of architecture in terms of colours and features fusing with the concept and geometry of the 'GOLDEN PROPORTION', the club house has emerged as community meeting point and would go a long way in improving the quality of health and lifestyle of the persons residing in the Neelkanth Green Community.

The color palette used for the club is within the earthy group of colors include yellow, orange & beige, which is very effective in athletic facilities and recreational location, representing a refreshing atmosphere that enhances activity, passion and alertness suggesting a warm environment.



*The club house has emerged as community meeting point and would go a long way in improving the quality of health and lifestyle*



# Market City Mumbai

(In association with Benoy Architects & P. G. Patki Architects)

Project Type	Mixed Use Development
Client	Phoenix Group
Area	1,150,000 Sq.ft.
Services	Executive Interior Designing Services

The concept developed by International firm - Benoy Architects was further developed by SSA in association with P. G. Patki Architects for the execution of detailed design work at Market City, Mumbai. There are two structures in this complex - the main mall and bazaar mall. The main concept for the main mall was the unfolding layers of onion - this is carried forward graphically in the floor plan that comes in and out. The food court and bazaar mall are conceptualized on building blocks and the vibrant colors of spices. SSA has sourced local, easily available materials, co-ordinated with various consultants, approved samples prepared tender packages during construction stage.

*The main mall concept was the unfolding layers of onion carried forward graphically*



# Market City Pune

(In association with Benoy Architects & P.G.Patki Architects)

Project Type	Mixed Use Development
Client	Phoenix Group
Area	1,120,000 Sq.ft.
Services	Executive Interior Designing Services

SSA in association with P. G. Patki Architects worked on the concept developed by International firm - Benoy Architects for detailed design of Market City, Pune. The conceptualization of a market place where people meet to do business was translated to the visualization of a skyline. Areas have been color coded to visually differentiate the levels. SSA has sourced generic finishing materials that are true to the intent whilst coordinating with the services, signages, lighting, landscape and other consultants.

*The conceptualization of a market place where people meet to do business was translated to the visualization of a skyline*





# Project Management

SSA's co-ordination, multi skilled & multi disciplinary knowledge with deep specializations gives our Clients the benefit of our services.

Our experience shows that close collaboration of all members of the design and construction team is a crucial element of the planning and construction stages.

The implementation of complex project demands, are only possible through cooperation. A moderator is essential for the coordination of everyone involved including the client.

It is our intention to unite all participating specialists within the construction team. We do not consider ourselves as inspectors of the planner, our definition of project management is the implementation of the client's ideas.

Collective experience and the knowledge of our partner's capabilities ensure the success of the project.



## NEELKANTH CLUB

Project Type	Hospitality
Client	Neelkanth Mansions & Infrastructure Pvt. Ltd.
Area	30,000 Sq.ft.
Services	Architectural & Interior Designing & Project Management Services

A 30,000 + Sq.ft. Neelkanth Club nestled with the backdrop of the Sanjay Gandhi National Park in Thane.

This Club has state of art recreational facilities which include a yoga room, health club, swimming pool with jacuzzi, squash court, multipurpose hall with landscape outdoor spaces.

Our project management team leveraged the experience, talent and input of all members in order to obtain the best results and increase value for the owner by reducing waste and maximizing efficiency throughout the life cycle of the project.



## KOHINOOR CITY COMMERCIAL-I

Project Type	Mixed Use Development
Client	Kohinoor Planet Constructions Pvt. Ltd.
Area	858,000 Sq.ft.
Services	Architectural, Interior Designing and Project Management Services

The mall is a multi use structure with minutely planned services which would cater to the retail stores, super stores, multiplex, restaurants, convenience shopping, office block, food courts.

The deep plan of building has the atrium as a central focus. The challenge of maintaining engineering precision for the façade as well as the courtyards and atrium which was at the heart of the project. The dividend of the intense value engineering exercise over the façade is that the glass wall is ahead of its time in terms of energy saving and aesthetic value. Extensive review and deliberations ensured that the finalized structural grid that had the flexibility of housing the retail at the lower levels and the various sized offices at the upper level.



## ASHIRWAD CO-OP. HSG. SOCIETY LTD

Project Type	Residential
Client	Ashirwad Co-op. Hsg. Soc. Ltd.
Area	83,000 Sq.ft.
Services	Architectural, Project Management and Liasoning Services

This is a tall 22 storey residential building with ready to start apartments and elegant amenities.

The engineering challenge was to ensure an efficient structural grid with climate responsive and environmentally friendly shading devices.

The PMC team in the initial stages of the project created a win win situation for all stakeholders by establishing an actionable work plan through integrated project delivery.



## KOHINOOR CITY – PHASE-III

Project Type	Residential
Client	Kohinoor Planet Constructions Pvt. Ltd.
Area	380,000 Sq.ft.
Services	Architectural and Project Management Services

A 380,000 Sq.ft housing development has been designed for Kohinoor group, in Mumbai.

As the site is located near the Airport, the challenge was to accommodate the residential units in the designated plot inspite of the height restriction of the aviation authority.

The design has incorporated various landscape features and amenities that will appeal to all, creating a sought after destination.

Kohinoor City Phase - III a residential complex with over 270+ apartments, the engineering challenge was the seamless fit of all eight buildings around the landscaped podium which house's the parking needs of the complex. The podium is the most sympathetic and efficient single storey structure that has a low profile, deep plan floor plate that swells to the edges of the containing building profile like a pancake in a pan.

The challenge in this project was deriving the sequence of activities that were constantly revised due to the complicated infrastructure layout and to meet the demands of the site conditions. In the initials stages of execution, the erratic nature of hard stature which differed within 5 mts. in the plot constantly challenged the schedule and design.



# SSA Architects

At SSA, we seek a balance between art and technology, form and function, beauty and purpose, vision and result. As Architects, Interior Designers & Engineers, we help shape the world around us, from high rise buildings to mixed use complexes, to residential, to educational, to healthcare, to hospitality complexes that enable our way of life. From creation to completion and beyond, we help clients reach the optimum potential of every project.

SSA, a multidisciplinary company in past 3 years has rendered services to numerous projects in various disciplines ranging to 15 million Sq.ft. with the support of 200+ professionals.

## Architecture

Problem solvers by nature, we serve clients by listening to their concerns, understanding their goals and sharing their vision. We believe that capital investments in facilities should be aligned with measurable, sustainable business benefits, and our portfolio reflects a commitment to excellence and client satisfaction, creating designs that work for today and tomorrow. Sustainability is synonymous with good design and principles of environmental awareness are fundamental to our design culture and integral to every discipline. For each building type, our design process is based on energy efficient building systems, appropriate selection of materials and form to maximize environmental conditions and long term performance. Our sustainable solutions have shaped projects such as Kohinoor Hospital, Kohinoor City Mall which have received recognition for environmental responsibility.

## Interior Designing

At SSA, we create environments to work, collaborate, learn, relax and inspire. SSA's interior team is recognized for designing appropriate environments for clients across all market sectors and for bringing a new approach to traditional challenges. Our projects range from residential homes, to corporate offices, to hospitality, to healthcare. In each of our project we act as 'stewards of our clients' aspirations and fiscal realities, working to capture opportunities and plan for long term. At SSA we go beyond sustainability, which demands whole systems understanding and inter disciplinary collaboration across design + engineering + construction management. Our specialized sustainable consultants lead project teams experienced in integrated planning and processes, utilizing the most effective techniques and technologies. Our design team creates a fusion of design, planning, engineering, environment and economics to balance aesthetic, environment and social goals that delivers long term benefits.

## Project Management

Clients can be assured of quality and professionalism of SSA staff and its extensive in-house resources, tailored to meet the unique needs of each client and project. We provide solutions in strategic sourcing, value added engineering solutions. We work closely with the clients to maintain clear focus and control during all phases of the project. We have a proven integrated approach that increases efficiency, reduces change order and schedule durations.

At SSA, we maintain a disciplined, system based approach to understanding and answering the needs of our clients. Our enduring core principles are integrity, commitment and teamwork where our clients are referred as "respected friends". Our mission is to deliver the highest level of service excellence to every client, every day, while making SSA a great place to work, where clients are assured of cost effective, quality driven construction services.



### Mumbai Office:

202-204,  
Prabhadevi Industrial Estate,  
Veer Savarkar Marg,  
Prabhadevi,  
Mumbai 400 028 India  
**Tel:** 91 22 6629 6500  
**Fax:** 91 22 6654 6505

[www.ssaarchitects.com](http://www.ssaarchitects.com)

