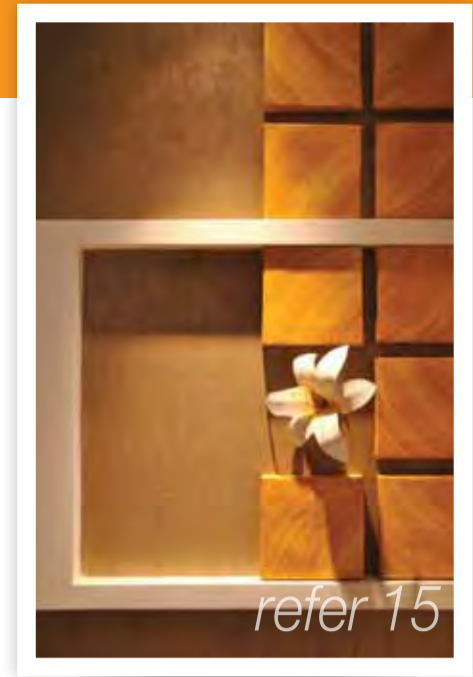




Founding Member of IGBC
Indian Green Building Council

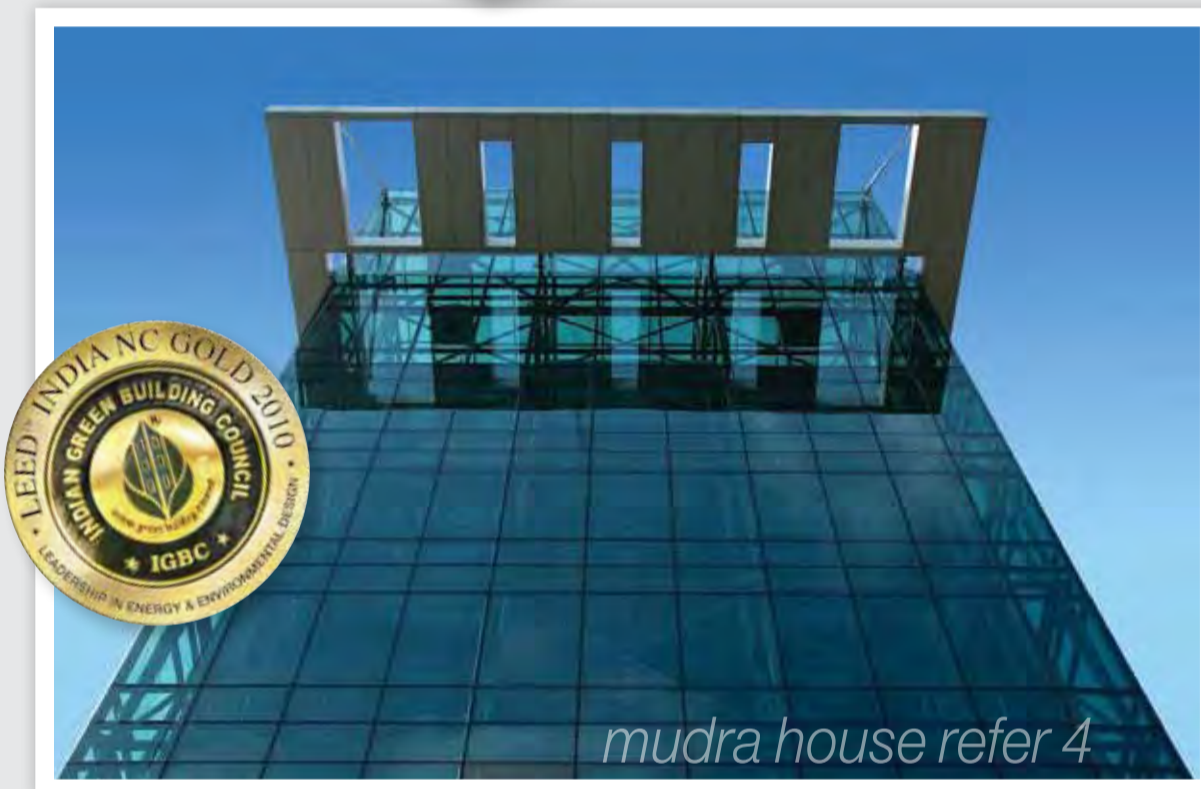


refer 15

FORM

2 0 1 0

S
A
N
D
E
E
P
S
H
I
K
R
E
&
A
S
S
O
C
I
A
T
E
S



mudra house refer 4

SSA offers clients the unique opportunity to work with a single source provider of complete project design services in Architecture, Interior Design and Project Management Consultancy. Our team can lead a project forward from the earliest stages of planning through to final documentation and then continue to support the client through construction, close out operation.

Make no assumption about what 'Architecture, Interior Design and Project Management Consultancy' entails. Within this umbrella, you are sure to run into something that surprises you, something that is unexpected of a design firm to provide.

Deliberate, Design, Deliver...



kohinoor elite refer 6



SSA is actively involved in leading sustainable design solutions that will become the norm in architecture and construction industries of the future.

refer 23

**I
N
S
I
D
E
S**

Mudra House	1	Residential Interiors	13
Kohinoor City Phase II	2	Pain & Weight Management Clinic	14
Kohinoor City Commercial II	3	Corporate Headquarters for Bisleri	15
Sayaji Hotels Ltd. Indore	4	Convention Centre, Pune	16
Kohinoor Elite	5	IIT, Ropar	17
Club House for Kohinoor City	6	School of Planning and Architecture, Bhopal	18
Fiori Gardens, Perungudi	7	Navdhan Terrace	19
IIT, Bombay	8	Navdhan Terrace – Sample Flat	20
Commercial Complex, Palavakkam	9	High Rise Apartment	21
R&D Centre for NBC, Jaipur	10	Sustainability	22
Neelkanth Business Park Sample Office	11	Project Management Consultancy	23
Navdhan Villas, Deolali	12	About SSA	24



Mudra House – A LEED NC certified project

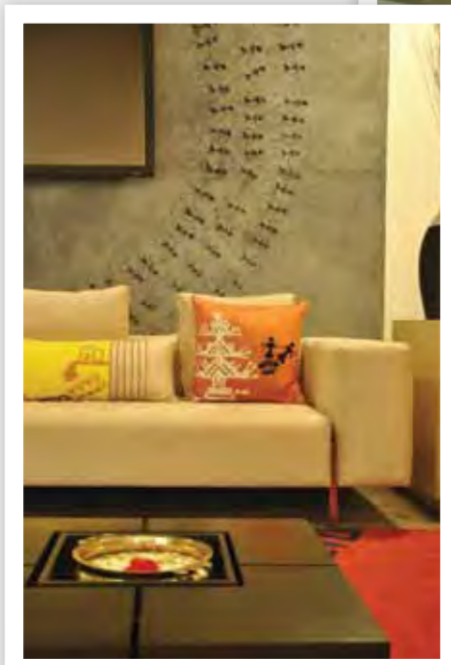


Project Type	Commercial
Client	Mudra Communication Ltd
Area	100,000 Sq.ft
Services	Architectural, Interior Designing, Liaisoning & Landscape Design Consultancy

SSA developed several options for the façade of Mudra House, and finally the option that echoed Mudra's strong passion for Indian culture was selected. The modern adaption of Indian heritage and earthy tones is reflected in the 21st century tech style building for which red clay fins and nouveau olive color glass envelope was crystallized. The strong iconic, curvilinear, white canopy which cuts across the 8th floor terrace makes a strong statement.

While developing the internal area of the building a detailed facility and functional analysis was done. Each floor has been strategically designed as per the requirements of that "Strategic Business Unit". The concept of 'VIBGYOR' and the palette of color box was adopted, as this best reflects Mudra's story of cluster of multiple creative talent, where each talent has its own unique strength and core competency which when brought together are as vibrant and inspiring as a 'RAINBOW'. To translate the Indian character into Architectural reality, innovative Warli pictograph is peppered along the interiors at strategic locations. This makes the journey through Mudra both wonderful and unique.

Being an environmentally sensitive organization, SSA Architects – ensured that the design and construction met and achieved LEED – Gold certification.



Translation of the warli art into Architectural reality



Kohinoor City Phase II



Project Type Residential
 Client Kohinoor Planet Constructions Pvt. Ltd.
 Area 850,000 Sq.ft
 Services Architectural Design & Project Management Consultancy

Kohinoor City is a gated community which houses 385+ apartments in 11 building which are Ground + 10 storeys structure with a combination of 2BHK, 3BHK, duplexes and penthouses along with well designed landscaped recreational spaces at the ground level.

The challenge was to accommodate approximately 800 car parks in the double of basement while optimizing the steel consumption in the structural grid. The concern of availability of adequate fresh air in the basement was solved by natural ventilation at appropriate intervals via cut outs in the slab.

The floor plate has been thoughtfully planned to accommodate 4 apartments per floor. The recreational area includes children playground area, sit out areas and walk ways set amidst beautifully designed landscaped areas.



Gated community that offers a life style... including garden apartments and penthouses

Kohinoor Commercial II – A LEED CS Gold certified Project



Project Type Commercial
 Client Kohinoor Planet Constructions Pvt. Ltd.
 Area 725,000 Sq.ft
 Services Architectural, Interior Designing & Project Management Consultancy

A well designed space can help a company increase revenue, decrease operational cost and boost employee morale. This was the basic concept around which the design was developed for the 4 individual 'Built to Suit' towers for the Kohinoor Group. The design is a concrete and steel structure with a fritted – glass façade, which emit the LED's glow by night. The individual towers are customized to meet the specific needs of the end user.

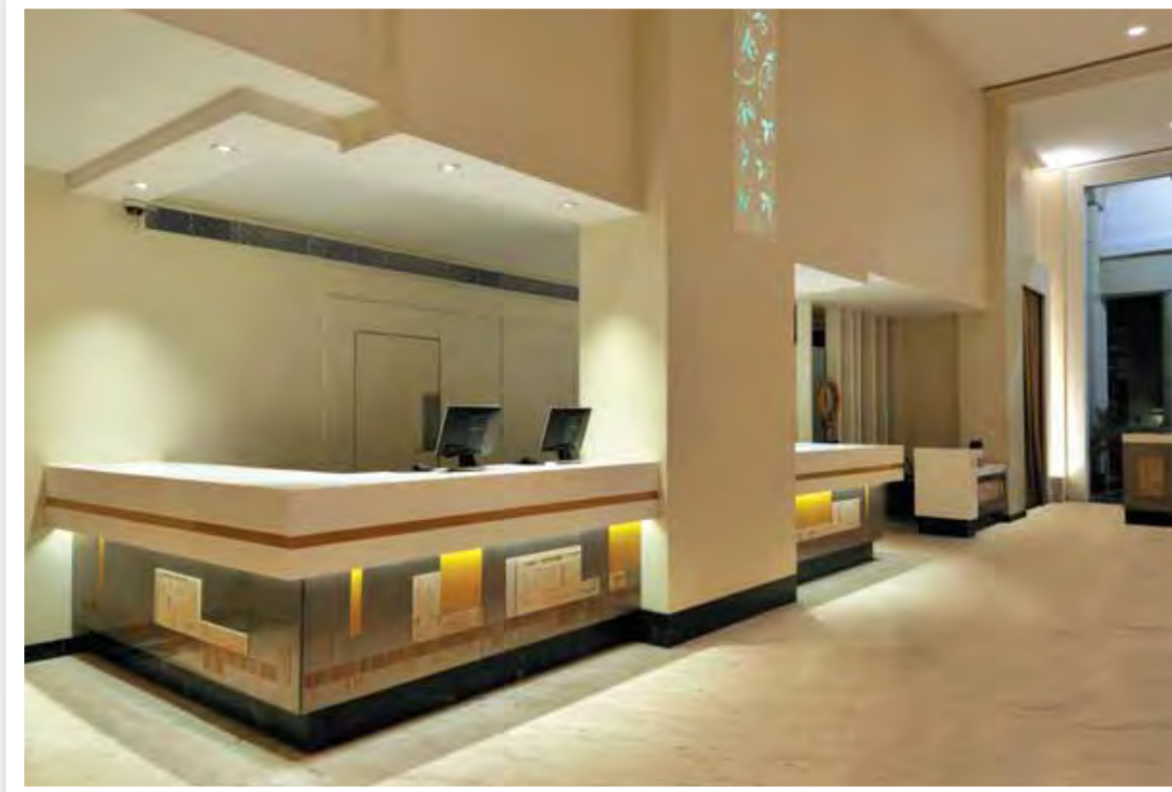
The building envelope is a complex systems with components that must work in unison to shield the building occupants and contents from weather, while effectively retaining the conditioned air, managing moisture migration, remaining stable and durable. SSA worked on all elements of the building envelope including roofs, walls and waterproofing to ensure that the most cost efficient façade is designed.

The building materials were from local sources when possible and sustainable measures (high efficiency glass façade, over decked roof, low flow plumbing, LED fixtures) reduce the energy usage by 20% and water usage by 40%. The State of Art utilities coupled with security systems ensures to makes this an ideal business address.

Built to suit customized towers – designed in concrete and steel with a fritted glass façade, emitting the LED's glow by night

Sayaji Hotel Ltd., Indore

Lobby



Chopstick City



Project Type	Hospitality
Client	Sayaji Hotels Ltd
Area	35,000 Sq.ft
Services	Interior Designing

Chopstick City: For Sayaji Hotels, the architectural style developed for the Chinese restaurant is based on the concept associated with 'China Town'. The walls are peppered with murals depicting animals such fish, dragons, birds, monkeys and other Chinese mythological figures. The more ambitious image driven undertaking is seen in the use of giant walls with MDF cut out panel design in which all 5 elements of Chinese mythology with their key words are engraved.

On the ceiling is the innovative use of the Chinese screen, while simple wooden tables & chairs are customized by SSA, using traditional shapes and geometrics for a simplified, but effective presence. The optimal use of space is the ultimate achievement and SSA recreates the China Town experience in the unlikely setting of a restaurant.

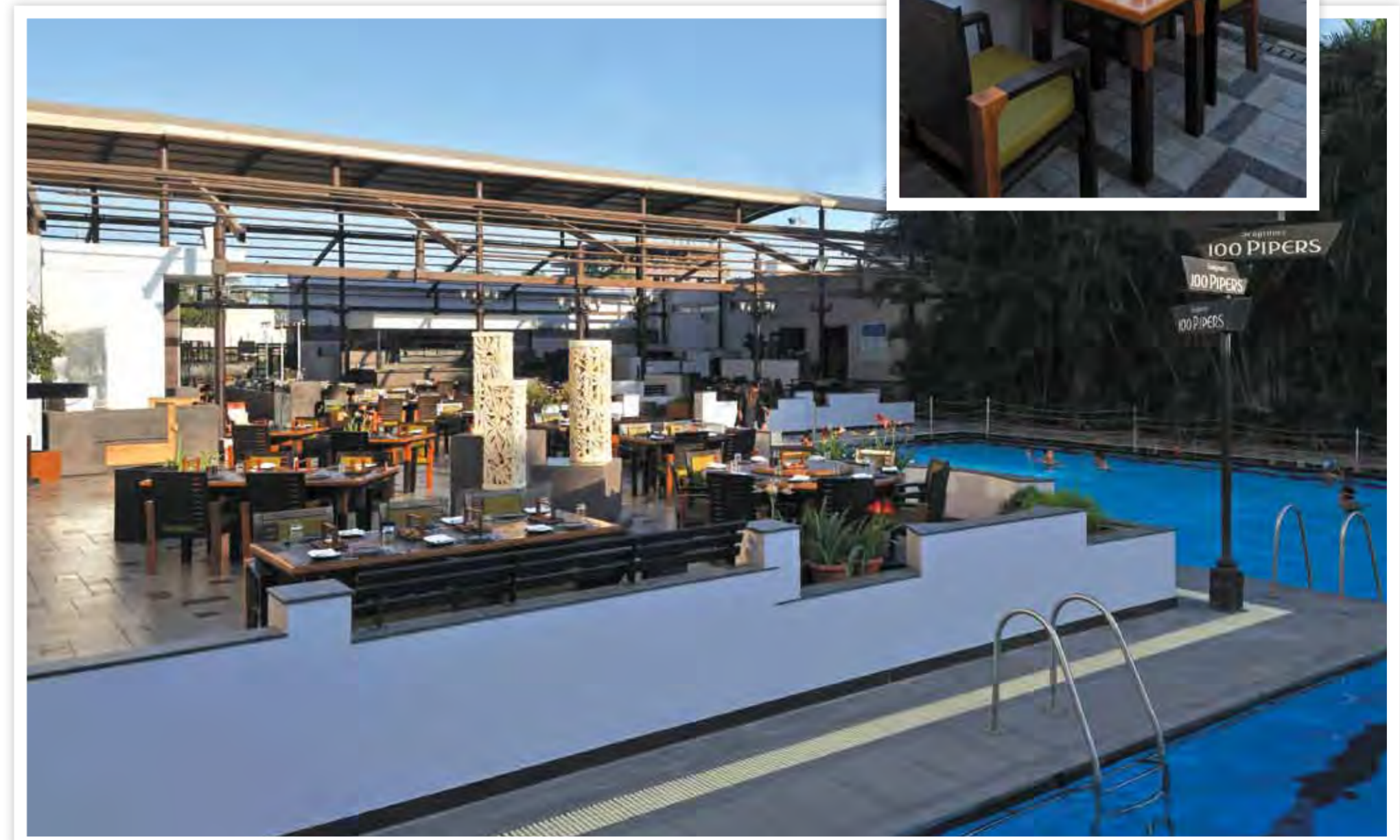
Kebab Ville: The Kebab Ville is a experiential destination restaurant developed for the Sayaji Group. SSA has created an experiential outdoor ambience where one can tantalize their senses on the rich aroma of deliberately prepared kebabs whist all the remaining senses are being pampered by the 'Close To Nature Accentuated Ambience'. Being located next to the swimming pool, the sound of water creates the perfect soothing backdrop for an experiential evening. The interiors are done in rich veneer wood and fire bricks, which are both warm and inviting. The rawness of the fire bricks accentuates the experience. The glass canopy enhances the volume and gives the space an open look creating a perfect outdoor setting for guest. Elegant humanizing touches enhance the ambience of the space.



Elegant humanizing touches enhance the ambience of the space



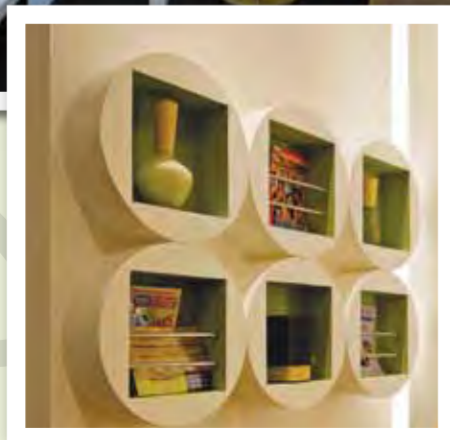
Kabab Ville



Fusion of Chinese mythology & minimalism



Kohinoor Elite



Different shapes for different spaces with warm, chic, no nonsense ambience - ideal for the business traveller

Project Type	Hospitality
Client	Kohinoor Elite Hotels Pvt. Ltd.
Area	85,000 Sq.ft
Services	Architectural & Interior Designing Consultancy

A smart & chic boutique hotel donned in simple façade with the comfort of the business traveller as its focus, was developed for the Kohinoor Group. The Kohinoor Elite has a charm comparable to a luxury hotel. The rooms are white, white and white. It is a sea of white with accented walls which enhance the pristine white.

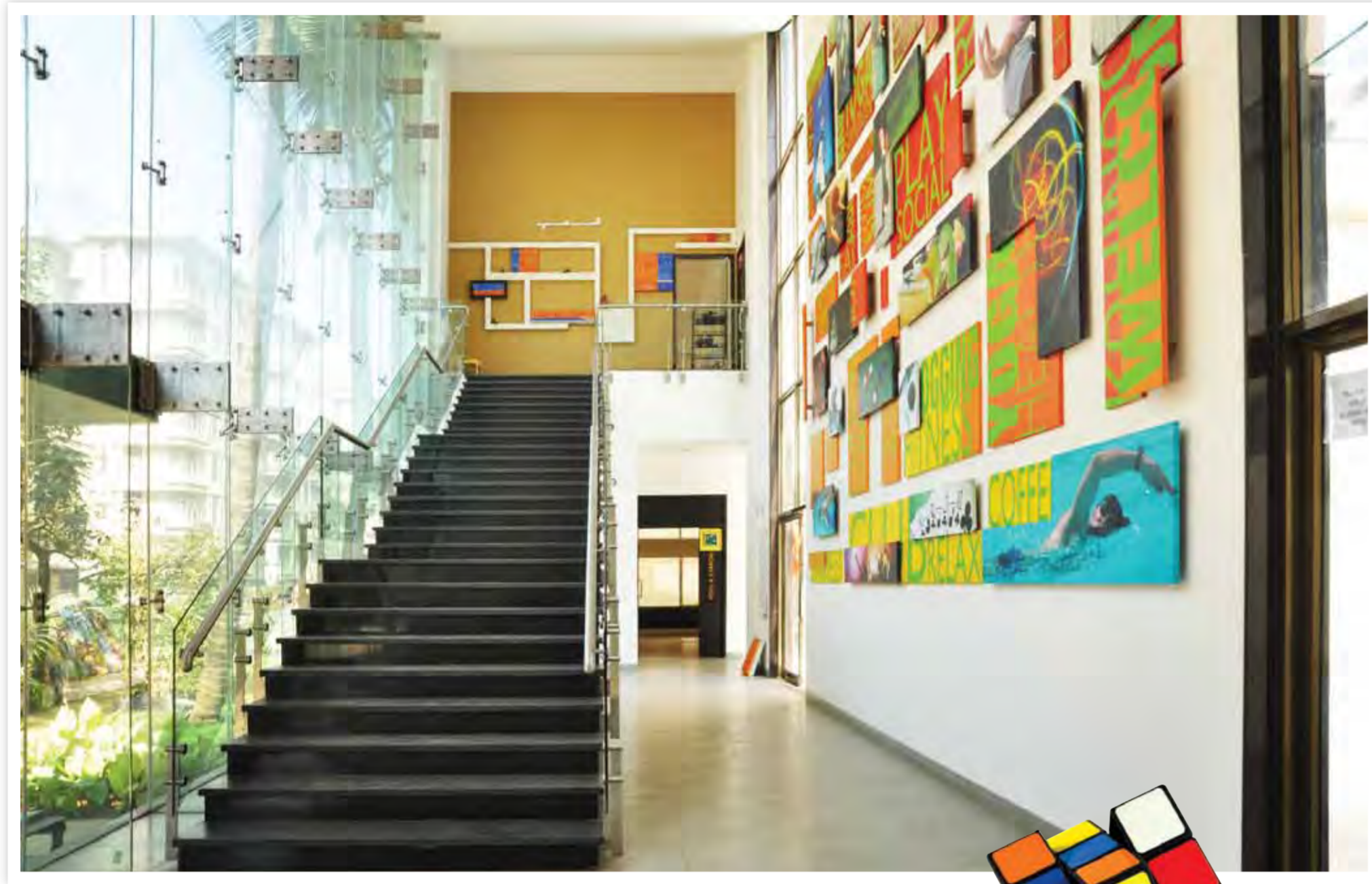
The reception and lobby are semi circular with comfortable lounge seating with dash of colorful cushions. The hotel boasts of the restaurant, the perfect place to go for the buffet breakfast and appetizing meals. The geometric shape of ovals is interestingly peppered along the décor to make the restaurant captivating. Each zone has distinct geometric shape assigned to it. The restaurant has oval, the lounge has the circles, the snack bar has square and floor corridors have triangles.

The unique spirit of Mumbai which is reflected in the graphic representation of the paintings peppered along the corridors. eg. The gateway of India, the original Koli (Fishermen of Mumbai), the management gurus 'Dabbawalas' etc, throughout the hotel.

Distinct young colors are used on each floor so that the guest feels he is in a new room whenever he revisits the hotel. The warm, chic, no nonsense ambience is ideal for the business traveller. The design team say that Kohinoor allowed the firm to 'Design Almost Every Element' right down to the coffee cup which are emblazoned with the oval shape of the restaurant.



Club House for Kohinoor City



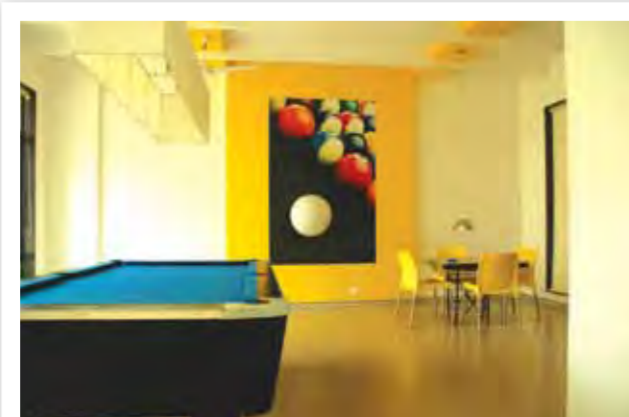
Project Type Hospitality
 Client Kohinoor Planet Constructions Pvt. Ltd
 Area 50,000 Sq.ft
 Services Architectural, Interior Designing & Project Management Consultancy

"What counts in sports is not the victory but the magnificence of the struggle...."

The inspiration for the detailed design is derived from the Rubik cube which is a three dimensional puzzle having 6 faces, 6 colors and each face has 9 sides. The element of squareness of the cube is translated in the furniture, wall paneling and lights. The element of the lines of the cube is seen in the central linear staircase, the wall paneling and art work. The element of the grid of the cube is reflected in the ceiling and mosaic tiles of the wall. The design is well thought and planned with ample of light and ventilation giving the club a bright, airy ambience. The pool along with the badminton court, the squash court, the recreation room, the State of Art gymnasium is complemented by the jogging track. The slanting green roof of the club gives it a quirky trendy look which gives the structure its unique identity.



Lines, square and cubes of the Rubik cube translated in the furniture, wall paneling, ceiling lights and art work



Fiori Gardens, Perungudi

Project Type Residential
 Area 150,000 Sq.ft
 Services Architectural Design Consultancy

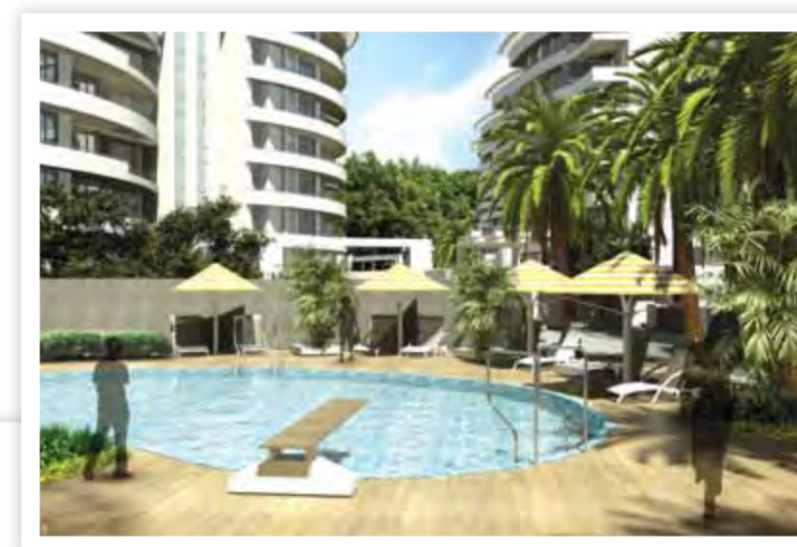
Located against a backdrop of a serene background, the master planning of a gated residential scheme is spread over 4 acres of land, which is low rise in character.

Here the challenge was to make every apartment 'vastu' compliant. The layout comprises of linear orientation of building along the perimeter of the plot. This created a large, shaded central recreational area for the residents.

It has 2BHK & 3BHK apartments with a multilevel podium that accommodates the jogging track, sit out area including the children play area. The high point is that, the apartments located at the 1st level have a terrace annexed.

The curvilinear architectural projection provide the multiple advantages of being a shading device to the fenestration, giving the elevation character and a mini garden to the apartment.

Low rise in character against a serene backdrop with all apartments 'vastu' compliant



IIT Bombay

A project in JV with gkkSSA cpl

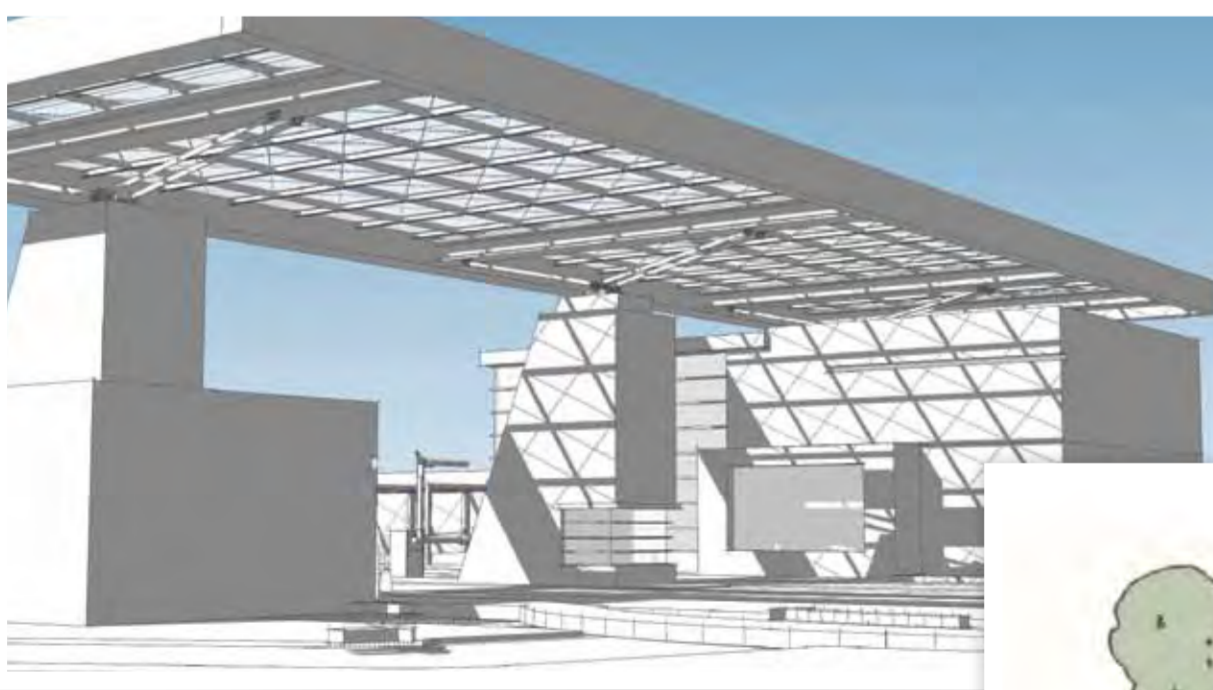
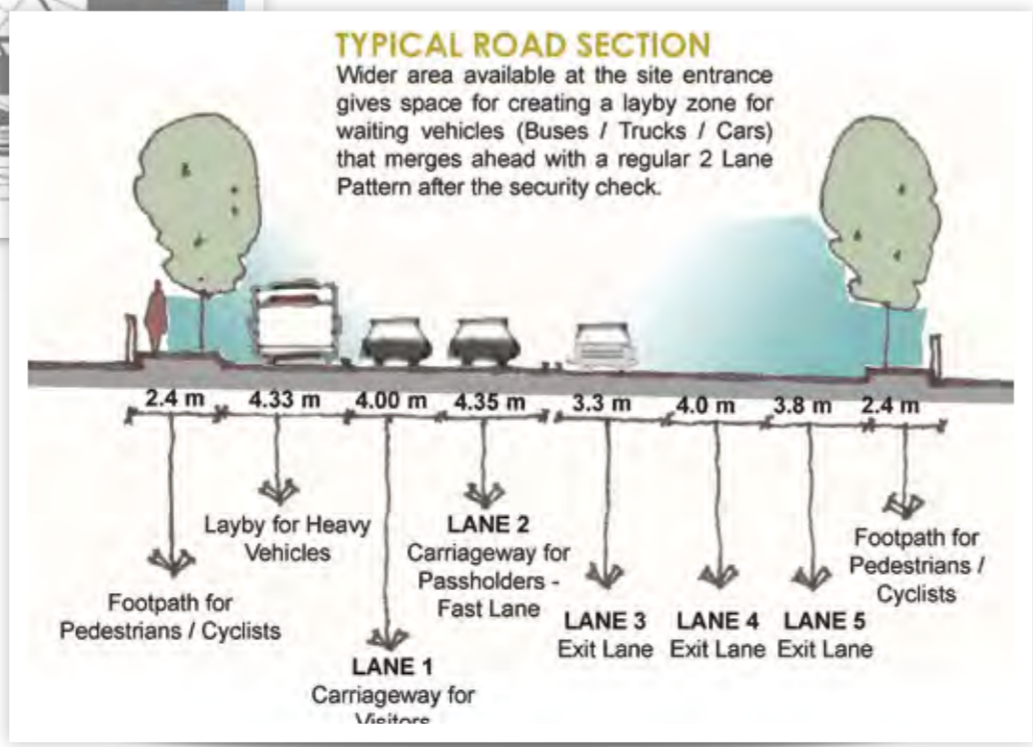
Project Type	Educational
Client	Indian Institute of Technology (Bombay),
Area	117,000 Sq.ft
Services	Architectural Design & Project Management Consultancy

One of the top education institutes, IIT – Bombay, which has its campus at Powai desired to develop a functional, entrance gate complex.

SSA in along with gkkSSA cpl developed a well designed functional entrance gate. The challenge was to create an iconic entrance gate, which is both functional and practical with the capability of handling 15000 + student population daily.

The strategic bifurcation of pedestrian and vehicular traffic has been well worked out to ensure efficiency. The design of the roads and pathway's has been planned carefully to ensure minimal disturbance to the existing lush flora of the complex. The gate complex is a well integrated design with security devices, which meet the needs of the complex.

Integrated design solution that is both functional & secure



Commercial Complex, Chennai

Project Type	Commercial
Area	98,000 Sq.ft
Services	Architectural Design Consultancy

A commercial development has been designed by SSA for this plot which is located in the heart of the Chennai city.

The master plan has been designed with an efficient floor plate and a central core for vertical transmission and service shafts. Various options were developed by SSA for the facade elevation, to reflect the iconic style of today's Architecture. The designs express a monolithic sculptural expression, which are translated by the fritted glass curtain wall along with the metal panel cladding giving it 'chic' look. Each option makes a statement, although in completely different fashion.

Iconic style of today's Architecture expressing a monolithic sculptural expression



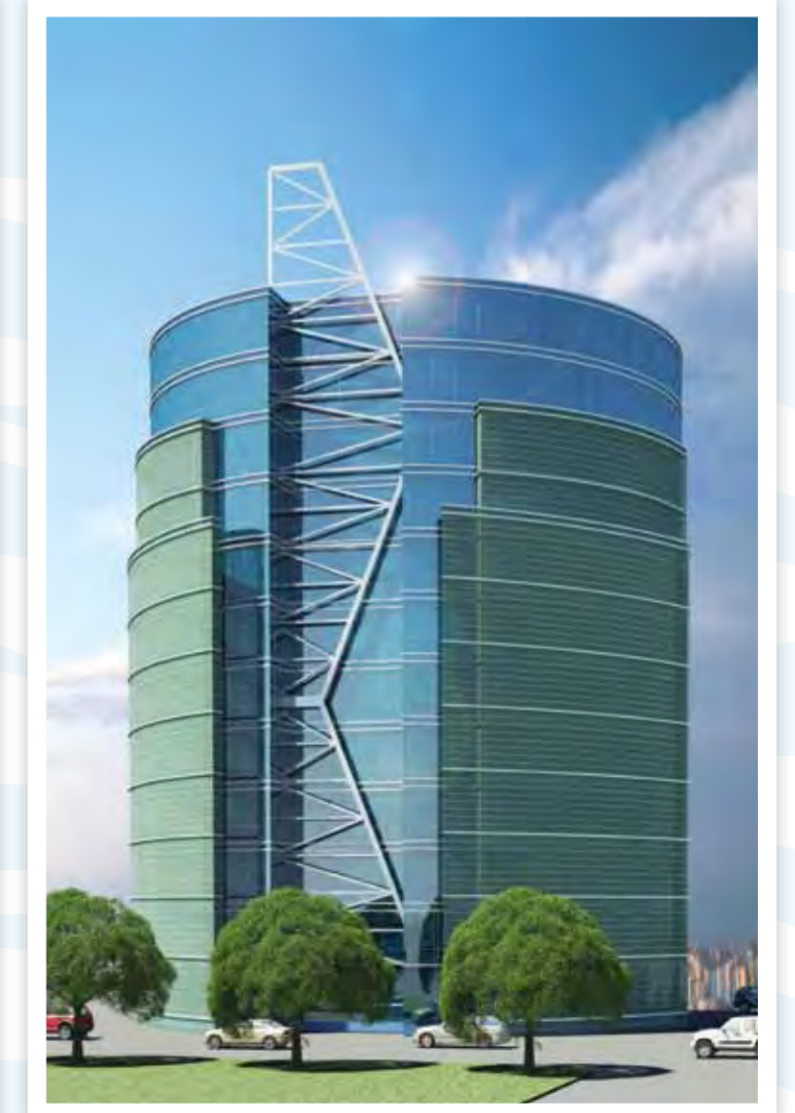
Option 1



Option 2



Option 3



Option 4

R&D Centre for NEI, Jaipur

Project Type	Commercial
Client	National Engineering Industries Ltd.,
Area	400,000 Sq.ft
Services	Architectural & Interior Design Consultancy

National Engineering Industries Ltd., (NEIL) located at Jaipur had a desire to develop an iconic Research and Development Centre where the leading car manufacturers like Mercedes, BMW, Audi etc. visit. The client wanted to develop a facility that would attract the best young talent and respond to an evolving work place in terms of culture, technology and environment.

It has a display area on the ground floor, which showcases their product range making the space interesting. The research and development office suites are located at the upper floors. The complex is well landscaped and designed to ensure that the visit to this centre is truly experiential.

The extension to the existing building has been carefully worked out with a seamless façade. The façade strategy includes a skin wall composed of tensile fabric panel with well designed graphics, symbolic to the brand are printed on this fabric making it unique in its character. This façade strategy allows for both contemporary look and maximum daylight to penetrate the building.

Tensile fabric facade reflecting the brand whilst enhancing both contemporary look and maximum daylight



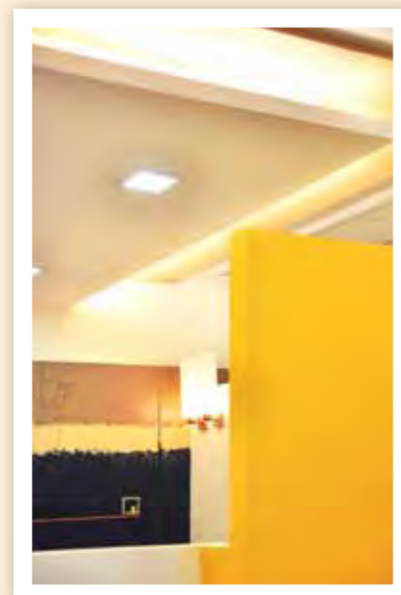
Neelkanth Business Park Sample Office



Project Type	Commercial
Client	Neelkanth Developers
Area	2,000 Sq.ft
Services	Architectural & Interior Designing

Neelkanth Developers desired to create a sample offices in Neelkanth Corporate Park and Neelkanth Business Park that would enable potential buyers envisage the space and its uses. SSA developed an open office plan for both the offices with glass partitions in the open office space area and with opaque partition for the cabins, reception and conference rooms to ensure privacy. The lights are strategically located to create a balanced environment.

The offices are done in white with textured accentuated walls in corporate tones. The wall art is peppered across the office which gives the monotony a pause while creating an interesting niches. The thoughtfully designed office spaces, includes a pantry and toilet block. The open planning encourages open discussions amongst colleagues and reduces square footage per person.



The open planning encourages open discussions amongst colleagues and reduces square footage per person

Navdhan Villas, Deolali

Project Type	Residential
Client	N.D. Developers
Area	415,000 Sq.ft
Services	Master Planning & Architectural Design Consultancy

A bungalow scheme which is spread over 15 acres of land is designed for N. D. Developers, on a plot located Deolali, Nashik., SSA has developed a scheme which reflects the local character in a design that is both modern & contemporary.

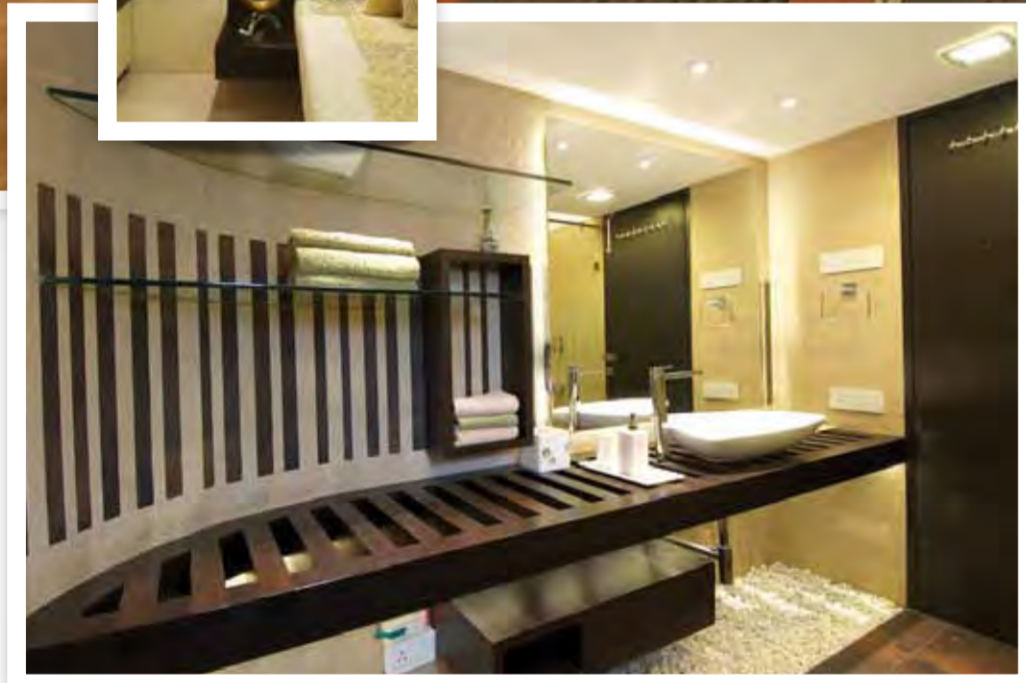
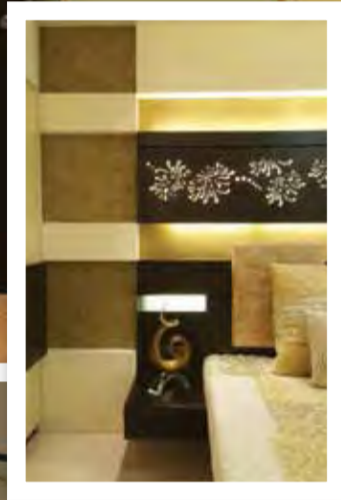
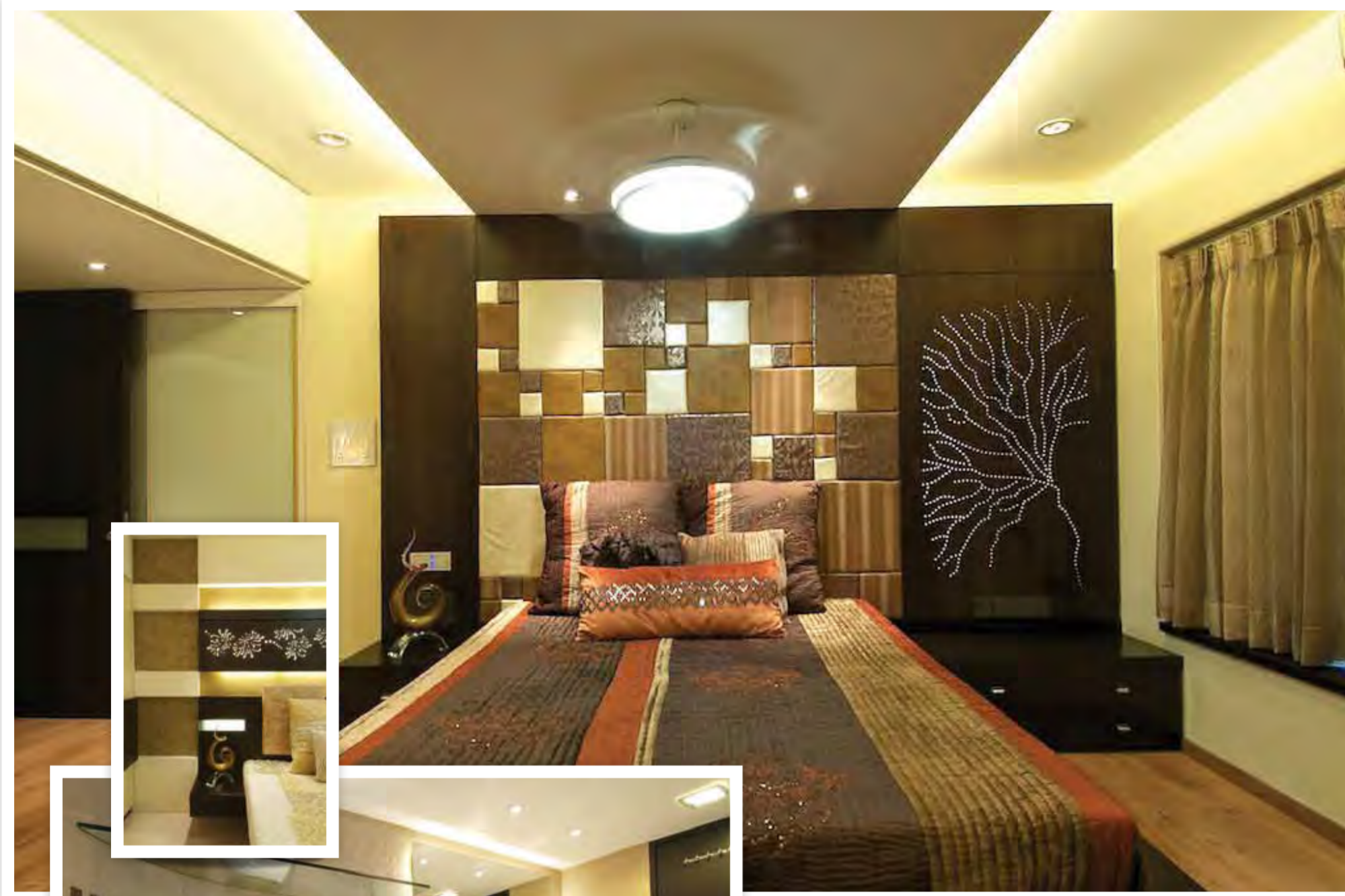
The master plan provides for 174 villas with a low rise apartment building on one side. The club house and recreational area in the centre make them easily accessible by all the residents.

The villa design is very thoughtful having 4 bedrooms with the sloping roof that adds to the aesthetical appeal. The overall scheme has a well thought infrastructure planning, exclusive landscape making it an ideal weekend home.



Recreational weekend homes reflecting local character – modern and contemporary

Residential Interiors



Project Type	Residential
Client	Private
Area	4,000 Sq.ft
Services	Interior Design Consultancy

This contemporary multilevel residence is an amalgamation of various design styles that reflect the clients penchant for something new.

The basic concept is simple straight lines and cubes with emphasis on linearity. To break the monotony, motifs, are randomly used. The rich colors of ivory copper and gold with different accent colors are used at each level to distinguish one level from the other making the ambience both rich and plush. The living room which has both formal and informal seating is done in the warm colors of ivory, white & gold with an accent wall and the tasteful art pieces enhance the style quotient.

The bedrooms are designed to function as self contained suites where the sleeping, sitting and entertainment zones area clearly designated. The clichéd veneer has been innovatively used with textures giving the place a dynamic, contemporary look whilst being practical.

Simple straight lines with emphasis on linearity and randomly used motifs



Pain & Weight Management Clinic

Project Type	Health Care
Client	Dr. Sarita Davare
Area	1,500 Sq.ft
Services	Interior Design Consultancy

'Your journey to a healthy you begins here...'

That is the concept for the designing of Pain & Weight Management Clinic for Dr. Sarita Davare. The concept of 'Rejuvenation' and a 'New Avatar' was translated through colors of nature and lilies. The clinic's main function is to function efficiently. Along these lines the designers worked to create a layout that would best serve this need. The privacy for the patients is ensured through well placed and properly partitioned enclosures. The fresh ambience is both, warm and welcoming making the patient comfortable from the moment he steps into the clinic. The open terrace has been converted into a landscaped mini garden which invites the nature into the clinic. The bathrooms are done in the contemporary colors of nature. The grooves in the rooms are an inspiration from the stem of flowers and the rooms are named after the parts of the flowers eg. pollen, Blossom, Style etc.

Detailed layout that functions efficiently



Corporate Headquarters for Bisleri

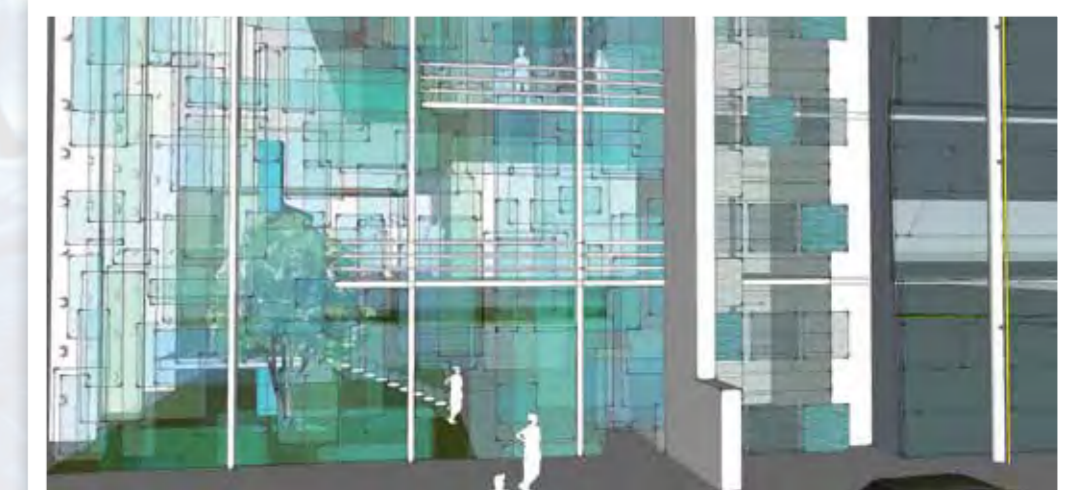


Architecture inspired by the translucency of Aqua

Project Type	Commercial
Area	170,000 Sq.ft
Services	Architectural Design Consultancy

SSA prepared a concept design for the corporate headquarters of Bisleri – a pioneer manufacturer of mineral bottled water. SSA has developed a well thought integrated design where the large footprint of the lower floor houses the bottling unit and the upper floor translate's into office suites and spaces.

The overall Architecture has been inspired by the translucency of water and colors of aqua. This was translated in the façade which was designed with fritted glass cladding with a dash of aqua marine color to resonate with the product. It is a modern contemporary style elevation with an iconic canopy.



Convention Centre, Moshi, Pune

A design competition in JV with IBI Group, Canada

Project Type	Mixed Use
Client	Pune International Exhibition Convention Centre
Area	8,712,000 Sq.ft
Services	Master Planning Consultancy

SSA in a joint venture with IBI Group were prequalified for a master planning competition project spread over 200+ acres of land at Moshi, Pune. IBI Group is a reputed multidisciplinary professional firm having their headquarters in Canada offering integrated services for past 25 years.

Planned as a destination set within a lush green oasis, this dynamic architectural complex is composed of exhibition, convention facilities, auditorium, open air theaters, corporate spaces, hostels, theaters, destination retail malls, high-end retail promenade and a cultural / retail village. It will also offer social and commercial opportunity from large corporations to email family business. It will offer a spectrum of convention facilities to cater to all scale of events and conferences with recreation facilities such as a signature 9 hole golf facility along with an exclusive club on the western edge of the site.

Beautiful parks and pedestrian promenades are also an integral part of the design confirming that PIECC Moshi is diligent in preserving natural resources such as existing streams and the environment in fact, the concept of innovative, sustainable development are an integral part of the master plan in every possible way from service engineering to the buildings themselves which are set within park environments.



Innovative, sustainable masterplan offering a spectrum of convention facilities



IIT Ropar

A design competition by gkkSSA Consultants Pvt. Ltd.

Project Type	Educational
Client	Indian Institute of Technology (Ropar),
Area	2,180,000 Sq.ft
Services	Master Planning Consultancy

SSA has a philosophical approach for educational projects. We believe that internal & external built environments can hold inherent educational value; shaping our sensory, intellectual and physical perception of space, as well as our sense of well being.

The linear form of site encouraged to develop a central spine along east-west axis, dividing the site in two equal halves and allowing a better movement system through the vast expanse of the campus.

All students-life activities site along this spine while the residential facilities cover the peripheral spaces making the site edges secure at night time.

Green pockets act as breathing lungs within the campus and also serve dividers to secure the site from surrounding barren lands.



Internal & external built environments that can hold inherent educational value

School of Planning and Architecture, Bhopal

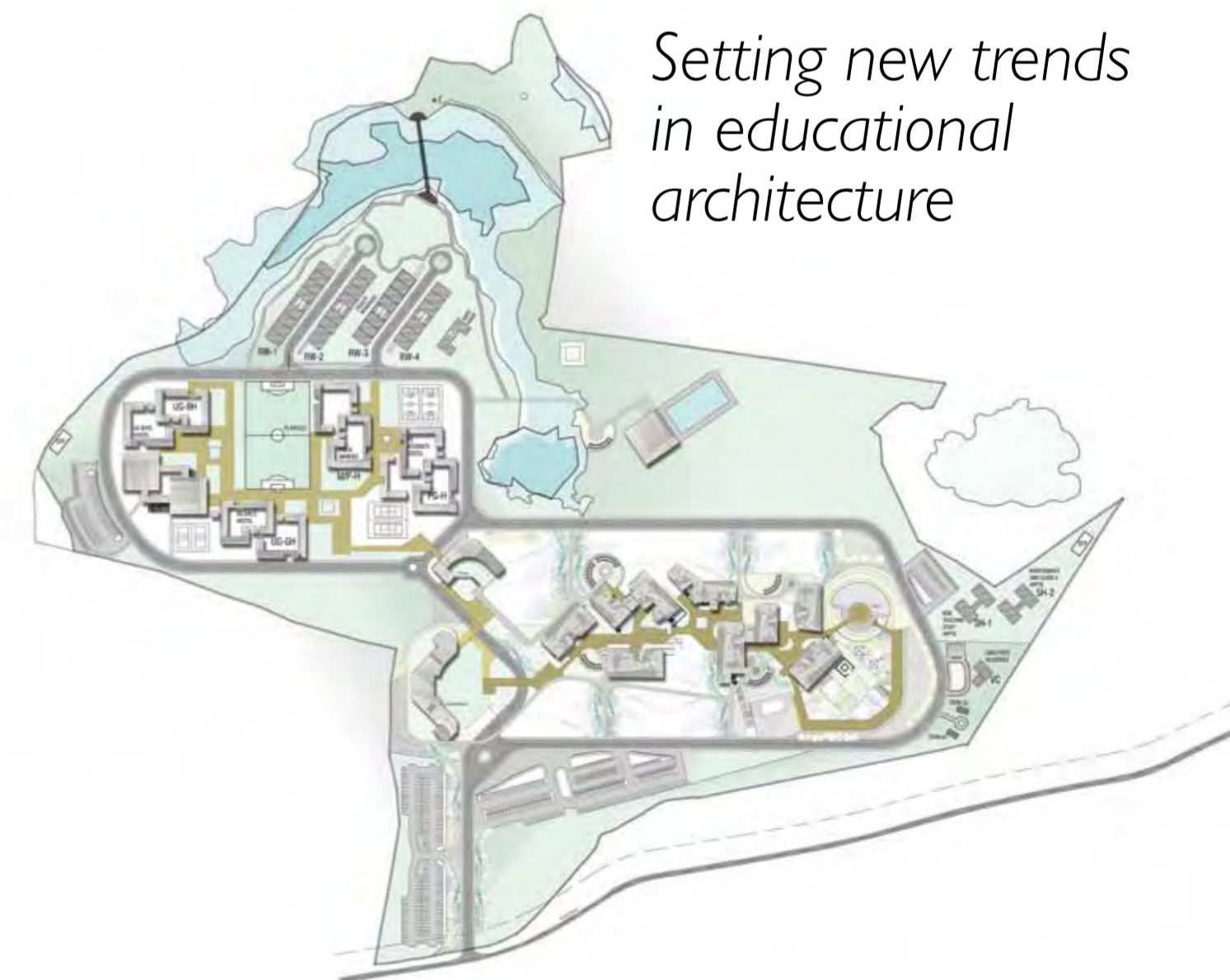
A design competition by gkkSSA Consultants Pvt. Ltd.

Project Type	Educational
Client	School of Planning & Architecture- Bhopal
Area	251,000 Sq.ft
Services	Architectural Design Consultancy

The advent of the Constructivists Learning Paradigm especially through the ubiquities information technology & ever increasing accessibility of digital technology, has led to a sea change in approach to education in the last three decades.

This has allowed for new trends in Architecture to reevaluate classroom structures and to consider unconventional learning spaces. The method of planning and design used in grouping building is critical on campus for 2 major reasons. First, because the site is vast in scale and composed of countless parcels with irregular boundaries that it is beyond human comprehension and requires an imposition of strong order. Second, because the campus will be built over a period of time and a certain geometry is essential to define the future growth.

The academic village will thus provide a frame works to enhance the sense of campus community and foster opportunities for socializing and learning in both formal / informal setting. A defined network of circulation a hier of open spaces and careful placement of major building will create a more intimate environment reducing the scales and enhancing vistas.



Setting new trends in educational architecture

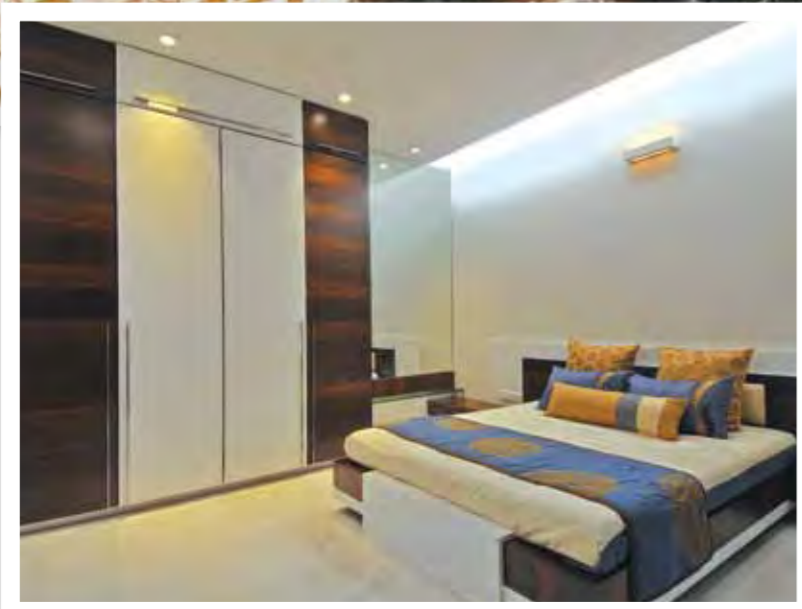
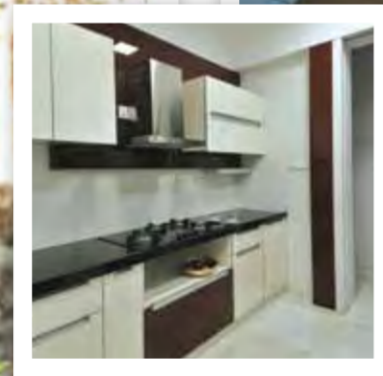
Navdhan Terrace



Project Type	Residential
Client	N.D. Developers
Area	855,000 Sq.ft
Services	Architectural Design Consultancy

Navdhan Terraces, a project developed for N.D. Developers is a proposed LEED certified residential development 'based on the concept that 'After Space and Structure, Materiality in the Essence of Architecture'. This is reflected in both, the surfaces and the terraces. This is 36 storey development with a built up area of 855,000 sq.ft. It comprises of 2 BHK and 3 BHK apartments with pent houses on the top. The planning is thoughtfully detailed with practicality as its focus. Besides offering a lifestyle, state of art utility services and amenities the USP of Navdhan Terraces is that each flat has a terrace annexed to it which is of double height, this enhances the experience of openness in the vertical structure.

The complex is a gated community with lush landscaped recreational areas. The parking needs are met by the underground parking provided at the basement and podium. The podium also houses the gym and swimming pool. Thorough attention is paid to details both that are visible and also those that are not visible, during the phases of planning, material selection and execution which has ensured that this development is environmentally sustainable, enhancing the natural light, ventilation and the quality of the living space.



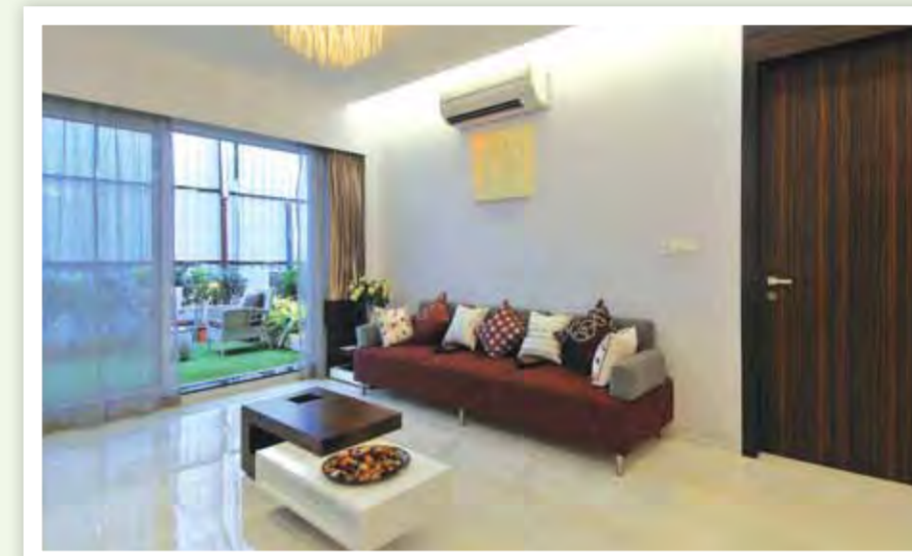
Based on the concept that 'After Space and Structure, Materiality in the Essence of Architecture

Navdhan Terrace – Sample Flat

Project Type	Residential
Client	N.D.Developers
Area	1,300 Sq.ft
Services	Architectural & Interior Design Consultancy

A practical, no nonsense functional design was developed for the sample flat at Navdhan Terraces. The idea behind this design was to ensure that the end user can visualize the maximum possible potential of the living space and amenities that are provided by N.D.Developers. Every apartment has a double height terrace which has been converted into a habitable outdoor space. This outdoor space is distinct but it still seamlessly connects to the indoor space giving it an ambience of openness.

The color scheme has a white backdrop that is accentuated by vibrant color such as blues, oranges etc. The ambience created is of both inviting and warm. which revitalizes the senses.



Ambience that revitalizes the senses – inviting and warm



High Rise Apartment

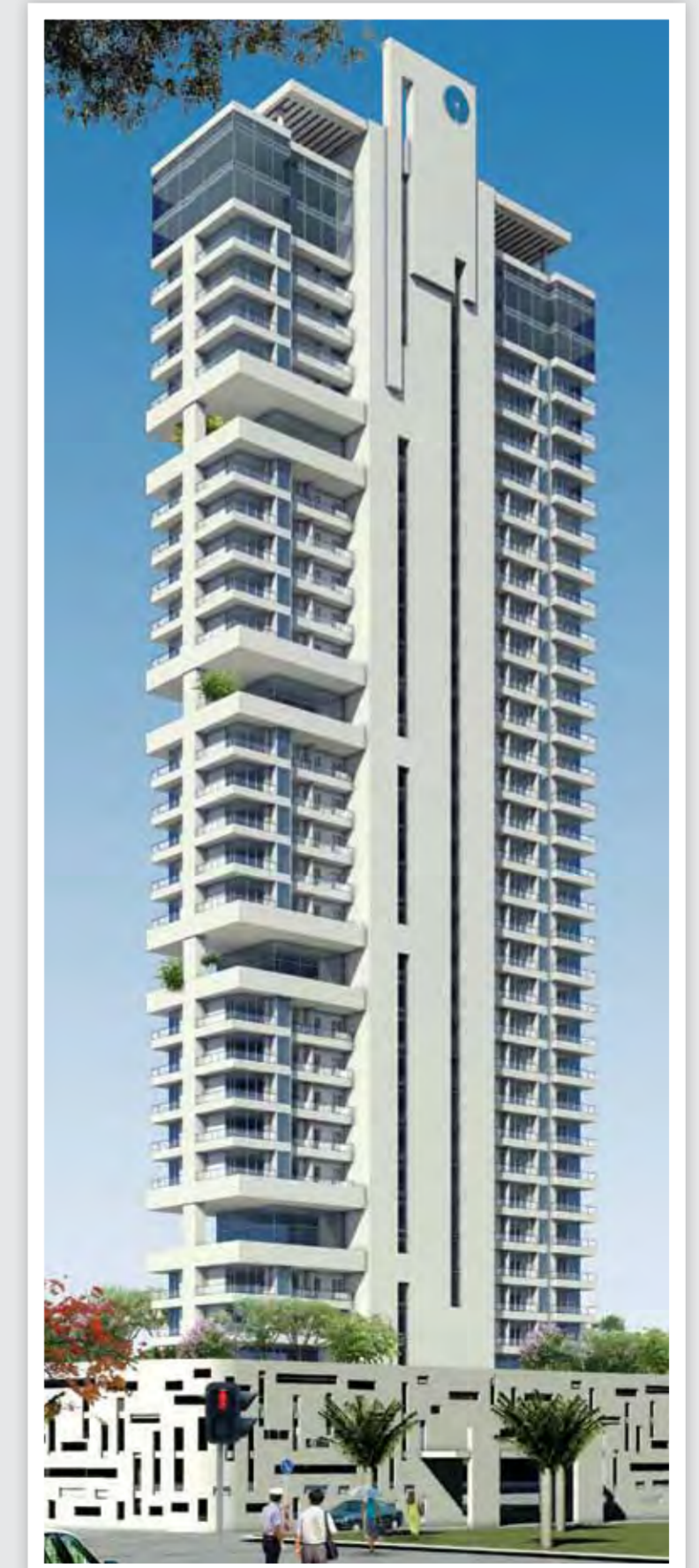
Project Type	Residential
Client	State Bank of India
Area	85,000 Sq.ft
Services	Architectural Design Consultancy

SSA participated in design competition to develop a high rise apartment tower for the senior officers of one of the leading banking institution, State Bank of India.

The development is proposed to be located in Navi Mumbai, a satellite suburb of Mumbai city.

The tower proposes 2 & 3 BHK apartment with modern amenities. Besides being iconic in nature the tower will have Green Environment friendly features that will be a step towards sustainability in conserving energy and water. This development proposes to aim for the " LEED GOLD" Certification.

Planning that encourages discussions with green environment friendly features



Sustainability

Sustainable design is intrinsic to SSA's firm culture. Truly responsible design, we believe, is an inherently sustainable design.

At SSA, our commitment to effective, responsible Architecture, Interior Design and Project Management Services manifests itself through our capacity to implement integrated, inter disciplinary designs that consider site, building and space as inter related systems.

As a full service design firm, SSA is uniquely positioned to leverage in house expertise and custom sustainable design tools to create environmentally and economically effective facilities.

From implementing basic sustainability strategies to working through the LEED Certification process, we collaborate with our clients to define environmental performance criteria supporting their goals and then work to fulfill those goals. SSA is a proud and an active member of IGBC – Indian Green Building Council.

Kohinoor Hospital has been awarded with Platinum Rating under the "Leadership in Energy and Environment Design" (LEED) Green Building Rating System.



State Bank of India's development proposes to aim for the "LEED GOLD" Certification.



Mudra House has been awarded with Gold Rating under the "Leadership in Energy and Environment Design" (LEED) Green Building Rating System.



Navdhan Terraces has been designed and proposed for the LEED rated residential complex.

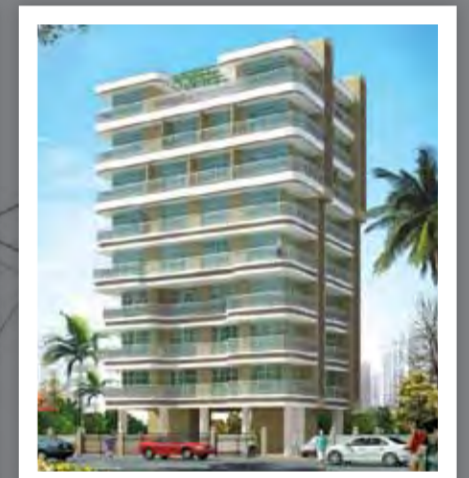
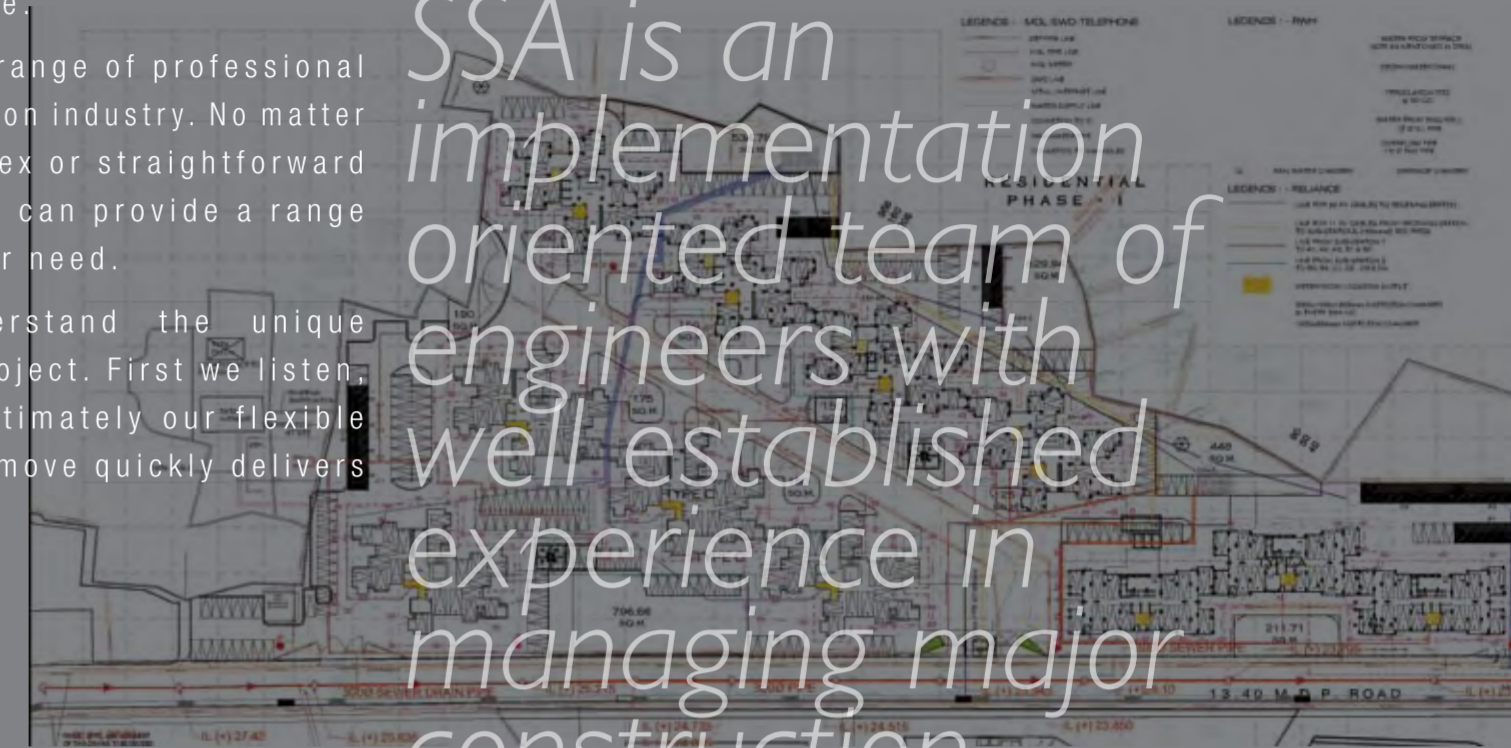
Project Management Consultancy

Delivery is our difference.

SSA provides a diverse range of professional services to the construction industry. No matter how large, small, complex or straightforward the project may be, SSA can provide a range of service that suits your need.

Our role is to understand the unique requirements of each project. First we listen, then offer solutions. Ultimately our flexible approach and ability to move quickly delivers the required results,

SSA is an implementation oriented team of engineers with well established experience in managing major construction projects.



SSA Architects

Architecture

Deliberate, Design, Deliver...

At SSA, we continue to provide Architectural Consultancy Service encompassing all specialized fields required to successfully design and construct a single or a complex of buildings. The skills gained through the development of large and complex developments along with execution have enabled us to provide creative solutions and innovative designs, while working with the full range of disciplines required to successfully deliver the project to the complete satisfaction of the client.

At SSA, we believe that Architecture is both the design of built structure and sustainable space where function has precedence over form.

As a part of SSA's sustainable strategy, we are proud to integrate the principles of sustainable design in all our work.

Interior Design

Synthesis of wish and experience

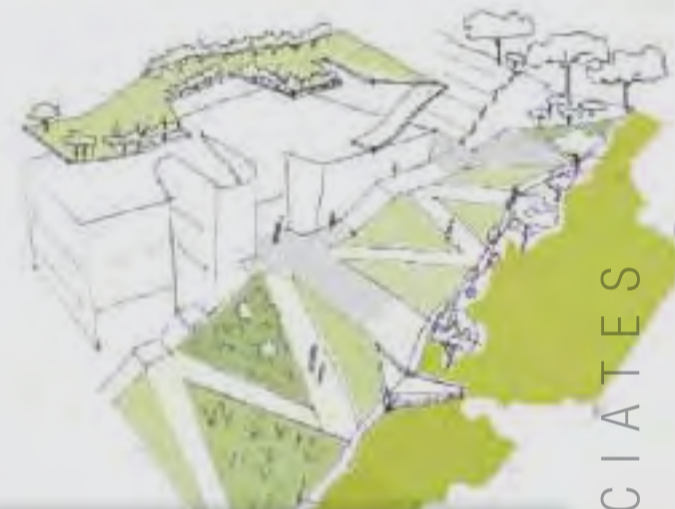
SSA provides comprehensive Interior Design services varying in scale, complexity and type of project. Design drives everything that we do. We believe that design fulfils and propels each client's goal and aspiration. That design articulates spaces to new levels of effectiveness, that design engages, inspires and fulfills and that design elevates the human spirit.

Our team begins each project by listening to our client. We listen and understand our client vision, goals and objectives. We design each project in a synthesis of everything that we hear from our client and our own professional expertise – work collaboratively and unite all professional disciplines in the process to create truly integrated design solutions that work best for our client.

Project Management Consultancy

System oriented approach

Projects executed by SSA take full advantage of its system oriented approach to project. Rigorous discipline in the use of SSA's project delivery system is the best protection offered to the owner against cost over runs during construction. Tight well coordinated, properly documented construction documents, accurate cost estimating, commitment to pro active cost management and quality assurance / quality systems are SSA's cornerstone.



SANDEEP SHIKRE & ASSOCIATES



Mumbai Office:

202-204,
Prabhadevi Industrial Estate,
Veer Savarkar Marg,
Prabhadevi,
Mumbai 400 025 India
Tel: 91 22 6629 6500
Fax: 91 22 6654 6505

Pune Office:

Trimurti Honey Gold
Off No. 301, Plot No. 44,
Range Hills Road,
Shivajinagar,
Pune 411 007
Tel: 91 20 2566 4266/67
Fax: 91 20 2566 4066

www.ssaarchitects.com

